

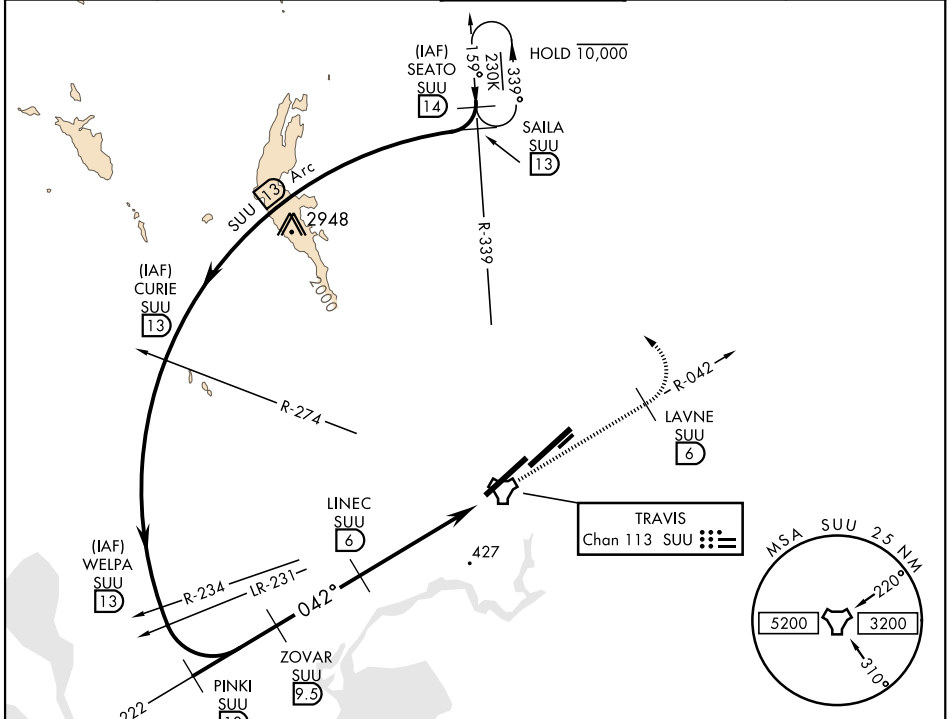
TACAN RWY 3L

| | | |
|------------------------------|-------------------------|--|
| TACAN SUU Chan 113 | APCH CRS 042° | Rwy Idg 11,001 TDZE 34 Arpt Elev 63 |
|------------------------------|-------------------------|--|

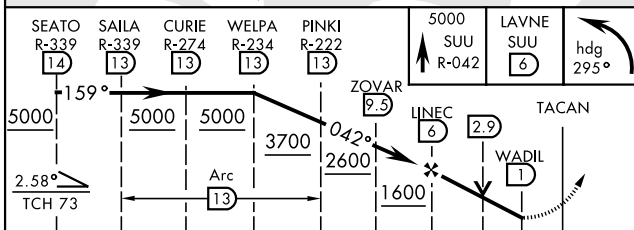
AL-488 [USAF]

TRAVIS AFB (KSUU)

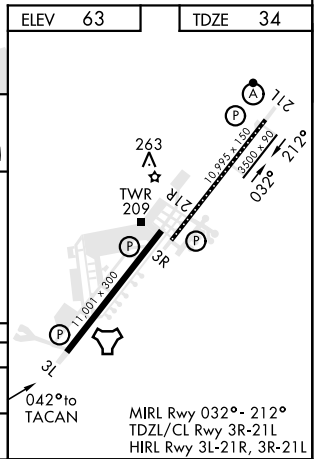
| | | | | |
|---|--|---|-------------------------------|---------------------------------|
| RADAR required. | | MISSED APPROACH: Climb to 5000 via SUU TACAN R-042 to LAVNE, then turn left via 295° course to intercept SUU R-339 to SEATO and hold, continue climb in hold to 5000. | | |
| * Circling not authorized NW of Rwy 3L-21R. | | | | |
| ATIS 135.55 292.125 | APP CON 119.9 322.325 (S) 126.6 281.45 (N) | TOWER 120.75 254.4 | GND CON 121.8 289.4 | CLNC DEL 127.55 335.8 |



EMERG SAFE ALT 100 NM 12,600 FROM SUU TACAN



| CATEGORY | A | B | C | D | E |
|-----------|--------------------|---|-------------------|--------|---------------|
| S-3L | 740/55 706 (700-1) | | 740-2 | 706 | (700-2) |
| CIRCLING* | 740-1 677 (700-1) | | 740-2 677 (700-2) | 1200-3 | 1137 (1200-3) |



TACAN RWY 3L

SW-2, 26 JAN 2023 to 23 FEB 2023

SW-2, 26 JAN 2023 to 23 FEB 2023