


LOC I-HKY 108.7	APP CRS 241°	Rwy Idg TDZE Apt Elev	6401 1190 1190
---------------------------	------------------------	-----------------------------	---

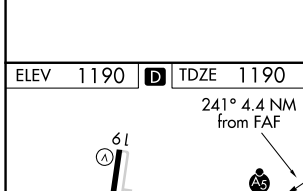
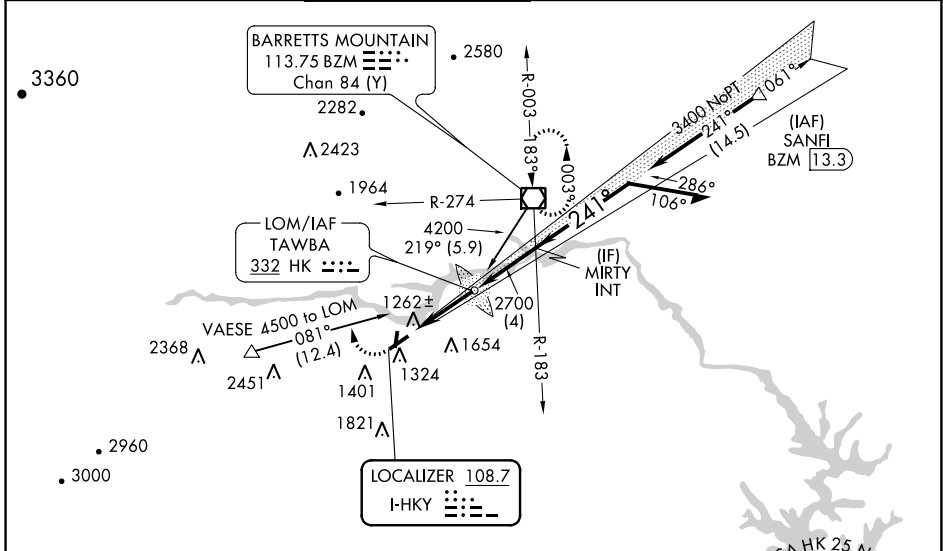
ILS or LOC RWY 24


HICKORY RGNL (HKY)

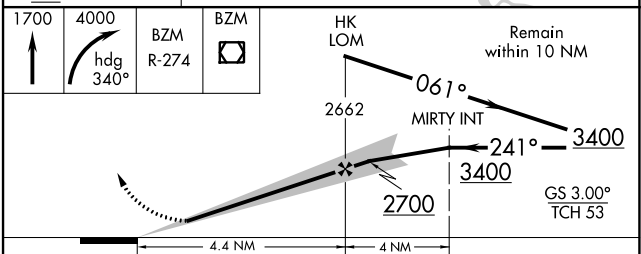
⚠ When local altimeter setting not received, use Morganton altimeter setting and increase all DA 33 feet and all MDA 40 feet. For inop MALSRL, increase S-LOC 24 Cat C/D visibility to 1½ mile. Circling Rwy 1, 6, 19 NA at night.

MALSRL
 MISSED APPROACH: Climb to 1700 then climbing right turn to 4000 on heading 340° and on BZM VOR/DME R-274 to BZM VOR/DME and hold.

ASOS 118.325	ATLANTA CENTER 125.15 263.0	HICKORY TOWER ★ 128.15 (CTAF) 0	GND CON 121.7	CLNC DEL 121.7	CLNC DEL 124.25 (When twr closed)
------------------------	---------------------------------------	---	-------------------------	--------------------------	--



ALTERNATE MISSED APCH FIX

TAWBA HK 332



FAF to MAP 4.4 NM					
Knots	60	90	120	150	180
Min:Sec	4:24	2:56	2:12	1:46	1:28

CATEGORY	A	B	C	D
S-ILS 24	1390-½ 200 (200-½)			
S-LOC 24	1600-½ 410 (500-½)	1600-¾ 410 (500-¾)		
CIRCLING	1640-1 450 (500-1)	1660-1 470 (500-1)	2020-2½ 830 (900-2½)	2020-2¾ 830 (900-2¾)

SE-2, 26 JAN 2023 to 23 FEB 2023

SE-2, 26 JAN 2023 to 23 FEB 2023