

WAAS CH 42921 W24A	APP CRS 241°	Rwy Idg TDZE Apt Elev	6401 1190 1190
--	------------------------	-----------------------------	---

RNAV (GPS) RWY 24

HICKORY RGNL (HKY)

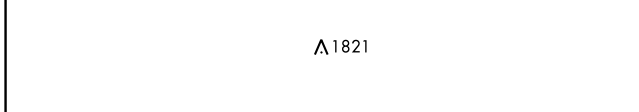
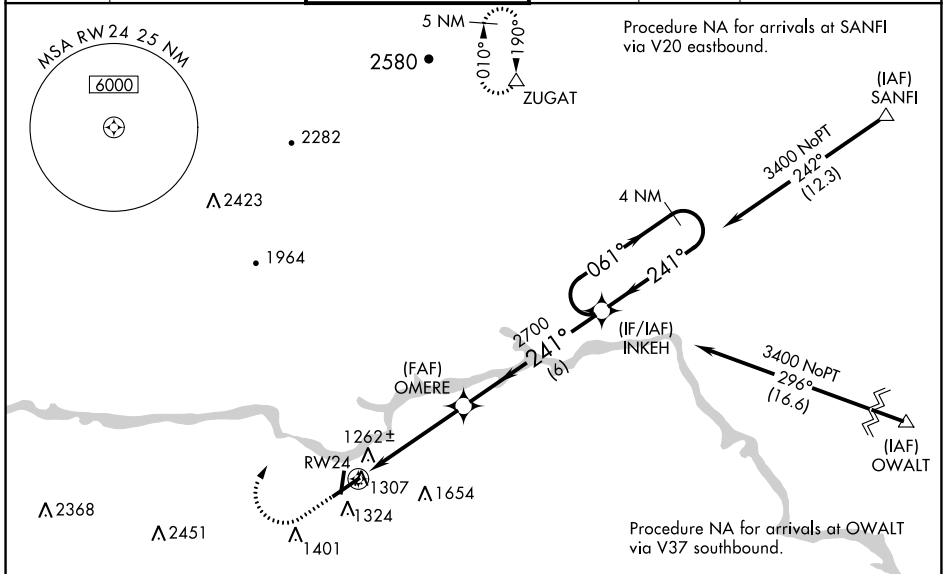
RNP APCH-GPS

⚠ Baro-VNAV NA when using Morganton altimeter setting. For uncompensated Baro-VNAV systems, LNAV/VNAV NA below -17°C or above 36°C. When local altimeter setting not received, use Morganton altimeter setting and increase all DA 39 feet and all MDA 40 feet; increase LNAV/VNAV all Cats and LNAV Cats C/D visibility 1/8 mile. Circling Rwy 1, 6, 19 NA at night. VDP NA with Morganton altimeter setting. For inop ALS, increase LNAV/VNAV all Cats visibility to 3/8 SM.

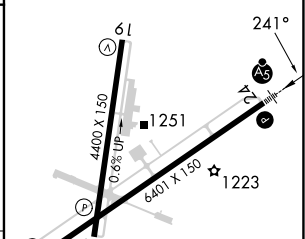
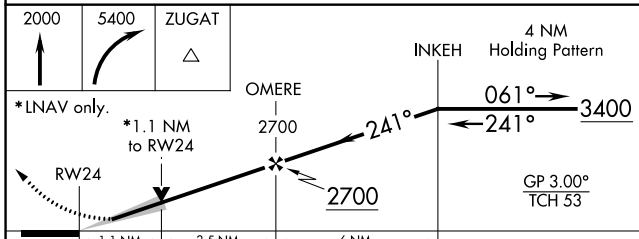


MISSED APPROACH:
Climb to 2000 then climbing right turn to 5400 direct ZUGAT and hold, continue climb-in-hold to 5400.

ASOS 118.325	ATLANTA CENTER 125.15 263.0	HICKORY TOWER ★ 128.15 (CTAF) 0	GND CON 121.7	CLNC DEL 121.7	CLNC DEL 124.25 (When twr closed)
------------------------	---------------------------------------	---	-------------------------	--------------------------	--



ELEV 1190	D TDZE 1190
-----------	--------------------



CATEGORY	A	B	C	D
LPV DA		1390-1/2	200 (200-1/2)	
LNAV/VNAV DA		1468-1/2	278 (300-1/2)	
LNAV MDA	1580-1/2	390 (400-1/2)	1580-5/8	390 (400-5/8)
CIRCLING	1640-1 450 (500-1)	1660-1 470 (500-1)	2020-2 1/2 830 (900-2 1/2)	2040-2 3/4 850 (900-2 3/4)

HIRL Rwy 6-24 **0**
MIRL Rwy 1-19 **0**
REIL Rwy 1 **0**
REIL Rws 6 and 19

SE-2, 26 JAN 2023 to 23 FEB 2023

SE-2, 26 JAN 2023 to 23 FEB 2023