

WAAS CH <b>82623</b> <b>W06A</b>	APP CRS <b>061°</b>	Rwy Idg <b>6401</b> TDZE <b>1152</b> Apt Elev <b>1190</b>
--	------------------------	---

# RNAV (GPS) RWY 6

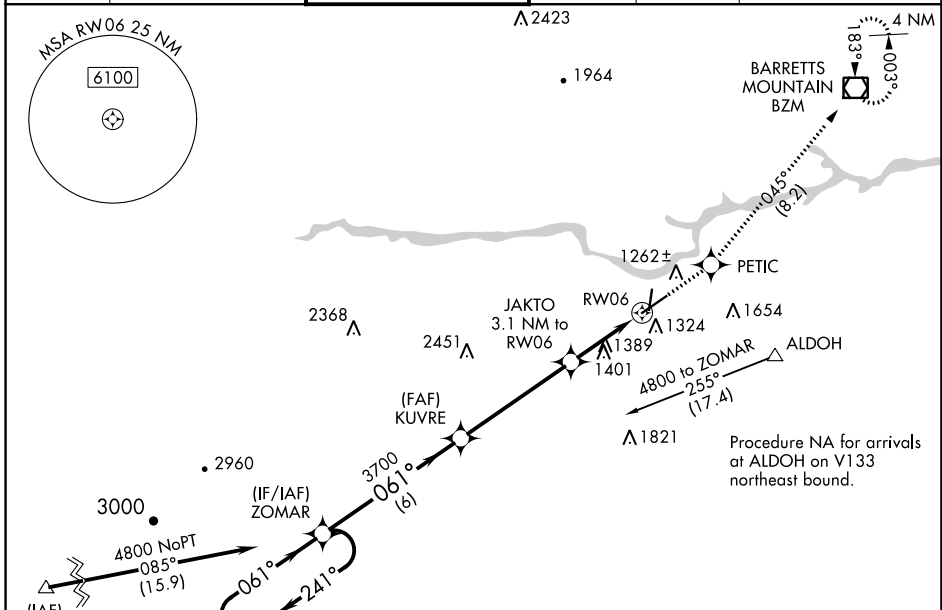
HICKORY RGNL (HKY)

RNP APCH-GPS.

▼ When local altimeter setting not received, use Morganton altimeter setting and increase all MDA 40 feet. When VGSi inop, Straight-in/Circling Rwy 6 procedure NA at night.  
 ▲ When VGSi inop, Circling Rwy 1 and 19 NA at night.

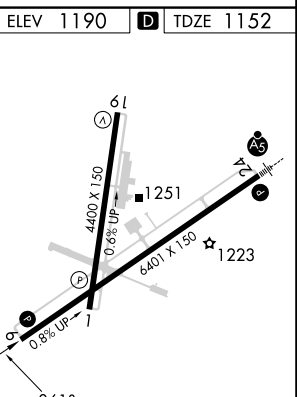
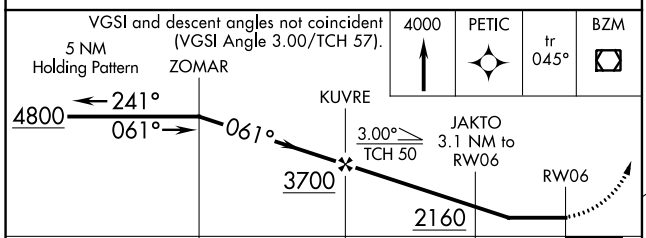
MISSED APPROACH: Climb to 4000 direct PETIC and on track 045° to BZM VOR/DME and hold.

ASOS <b>118.325</b>	ATLANTA CENTER <b>125.15 263.0</b>	HICKORY TOWER ★ <b>128.15 (CTAF) 0</b>	GND CON <b>121.7</b>	CLNC DEL <b>121.7</b>	CLNC DEL <b>124.25</b> (When twr closed)
------------------------	---------------------------------------	---	-------------------------	--------------------------	--



Procedure NA for arrivals at GENOD on V20-222 southwest bound and V605 southbound.

Procedure NA for arrivals at ALDOH on V133 northeast bound.



CATEGORY	A	B	C	D
LP MDA	1600-1	448 (500-1)	1600-1 $\frac{3}{8}$	448 (500-1 $\frac{3}{8}$ )
LNAV MDA	1740-1	588 (600-1)	1740-1 $\frac{3}{4}$	588 (600-1 $\frac{3}{4}$ )
CIRCLING	1740-1	550 (600-1)	2020-2 $\frac{1}{2}$ 830 (900-2 $\frac{1}{2}$ )	2040-2 $\frac{3}{4}$ 850 (900-2 $\frac{3}{4}$ )

- HIRL Rwy 6-24 0
- MIRL Rwy 1-19 0
- REIL Rwy 1 0
- REIL Rwy 6 and 19

SE-2, 26 JAN 2023 to 23 FEB 2023

SE-2, 26 JAN 2023 to 23 FEB 2023