

VOR/DME BZM 113.75 Chan 84 (Y)	APP CRS 229°	Rwy Idg TDZE 1190 Apt Elev 1190	6401
--	------------------------	---	-------------

VOR/DME RWY 24

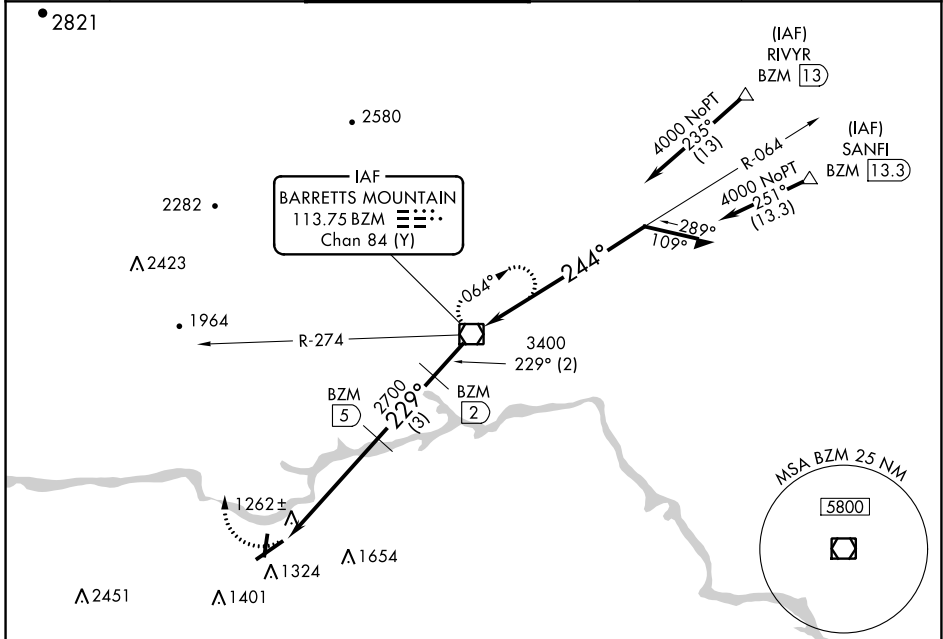
HICKORY RGNL (HKY)

⚠ Inop table does not apply. Night landing: Rwy 1/6/19 NA. When local altimeter setting not received, use Morganton altimeter setting and increase all MDA 40 feet and visibility S-24 and Circling Cat D ¼ SM.



MISSED APPROACH: Climbing right turn to 4000 via heading 340° and BZM R-274 to BZM VOR/DME and hold.

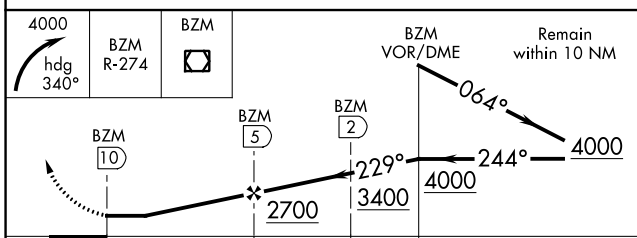
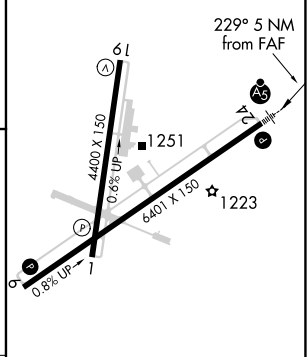
ASOS 118.325	ATLANTA CENTER 125.15 263.0	HICKORY TOWER ★ 128.15 (CTAF) 0	GND CON 121.7	CLNC DEL 121.7	CLNC DEL 124.25 (When twr closed)
------------------------	---------------------------------------	---	-------------------------	--------------------------	--



SE-2, 26 JAN 2023 to 23 FEB 2023

SE-2, 26 JAN 2023 to 23 FEB 2023

ELEV 1190	D TDZE 1190
-----------	--------------------



CATEGORY	A	B	C	D
S-24	1600-1	410 (500-1)	1600-1¼	410 (500-1¼)
CIRCLING	1640-1 450 (500-1)	1660-1 470 (500-1)	2020-2½ 830 (900-2½)	2040-2¾ 850 (900-2¾)

HIRL Rwy 6-24 **0**
 MIRL Rwy 1-19 **0**
 REIL Rwy 1 **0**
 REIL Rws 6 and 19