

OKMULGEE, OKLAHOMA

AL-727 (FAA)

22363

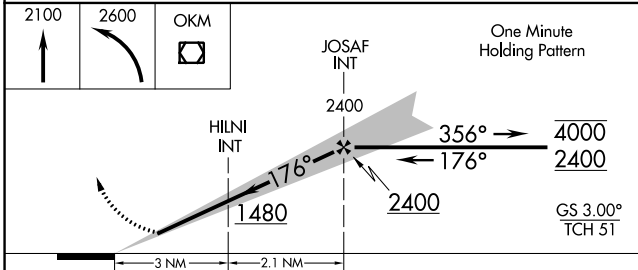
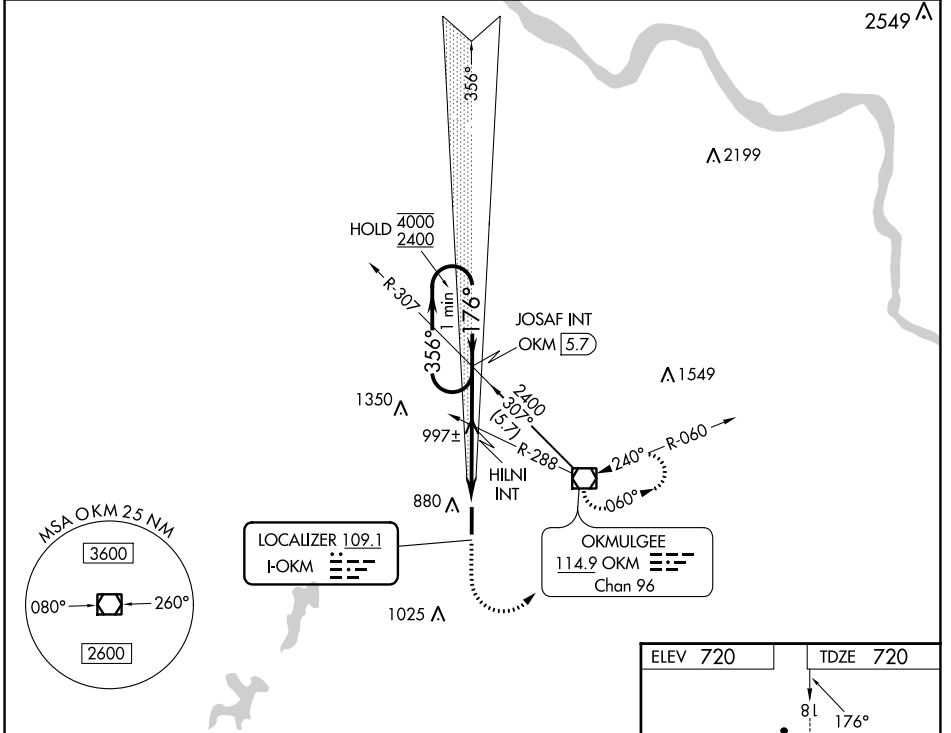
LOC I-OKM 109.1	APP CRS 176°	Rwy ldg TDZE Apt Elev	5150 720 720
---------------------------	------------------------	-----------------------------	---

ILS or LOC RWY 18

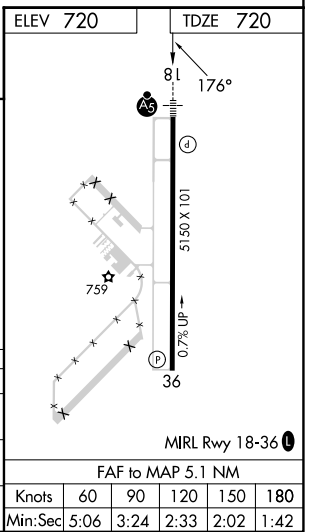
OKMULGEE RGNL/PAUL AND BETTY ABBOTT FLD (OKM)

▼ ▲ NA	For inop ALS, increase S-ILS all Cats visibility to 3/4 SM, increase S-LOC Cats A and B visibility to 1 SM, and S-LOC Cat C visibility to 1 1/2 SM.	MALSR 	MISSED APPROACH: Climb to 2100 then climbing left turn to 2600 direct OKM VOR/DME and hold, continue climb-in-hold to 2600.
-------------------------	---	-----------	---

AWOS-3PT 118.225	TULSA APP CON 119.85 338.3	UNICOM 123.0 (CTAF) ①
----------------------------	--------------------------------------	---------------------------------



CATEGORY	A	B	C	D
S-ILS 18	920-1/2 200 (200-1/2)			NA
S-LOC 18	1260-1/2 540 (600-1/2)		1260-1 540 (600-1)	NA
C CIRCLING	1320-1 600 (600-1)	1340-1 620 (700-1)	1340-1 3/4 620 (700-1 3/4)	NA



OKMULGEE, OKLAHOMA
Amdt 2 24MAR22

OKMULGEE RGNL/PAUL AND BETTY ABBOTT FLD (OKM)
35°40'N-95°57'W

ILS or LOC RWY 18

SC-1, 26 JAN 2023 to 23 FEB 2023

SC-1, 26 JAN 2023 to 23 FEB 2023