

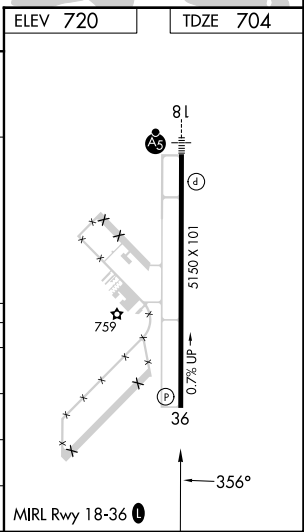
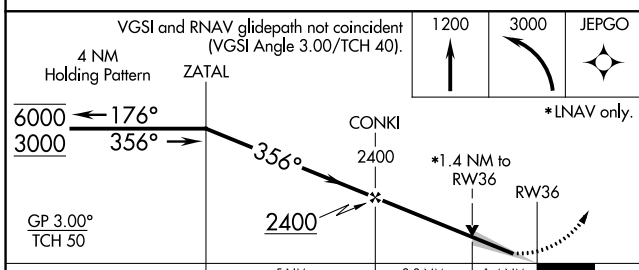
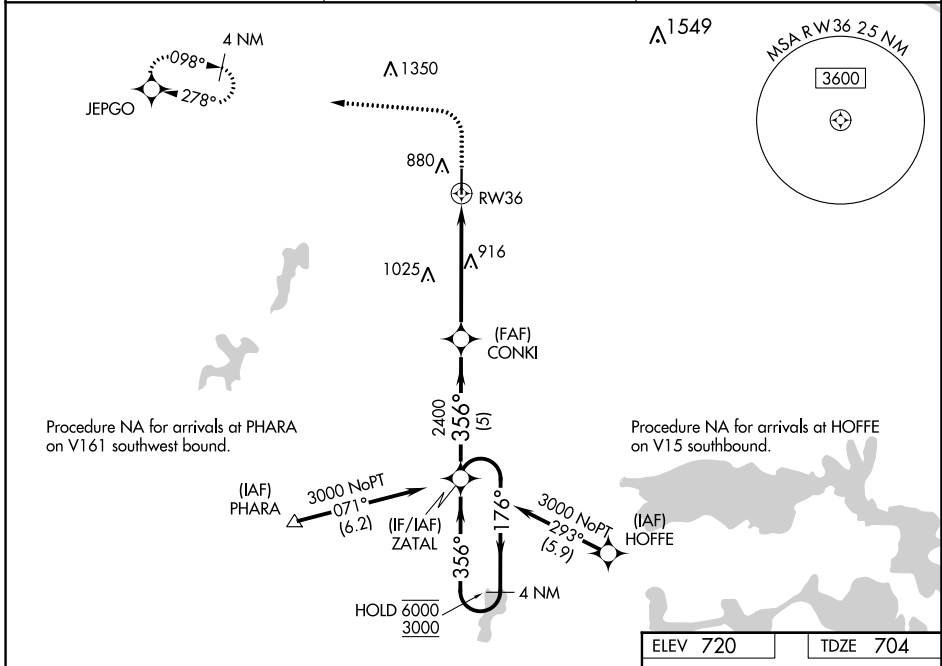
WAAS CH 69242 W36A	APP CRS 356°	Rwy Idg TDZE Apt Elev	5150 704 720
--	------------------------	-----------------------------	---

RNAV (GPS) RWY 36

OKMULGEE RGNL/PAUL AND BETTY ABBOTT FLD (OKM)

RNP APCH. ▼ ▲ For uncompensated Baro-VNAV systems, LNAV/VNAV NA below -24°C or above 45°C.	MISSED APPROACH: Climb to 1200, then climbing left turn to 3000 direct JEPGO and hold.
---	--

AWOS-3PT 118.225	TULSA APP CON 119.85 338.3	UNICOM 123.0 (CTAF) 0
----------------------------	--------------------------------------	---------------------------------



CATEGORY	A	B	C	D
LPV DA		904- ³ / ₄	200 (200- ³ / ₄)	
LNAV/VNAV DA		954- ³ / ₄	250 (300- ³ / ₄)	
LNAV MDA	1180-1	476 (500-1)	1180-1 ³ / ₈	476 (500-1 ³ / ₈)
◻ CIRCLING	1180-1 460 (500-1)	1340-1 620 (700-1)	1340-1 ³ / ₈ 620 (700-1 ³ / ₈)	1640-3 920 (1000-3)

RNAV (GPS) RWY 36

SC-1, 26 JAN 2023 to 23 FEB 2023

SC-1, 26 JAN 2023 to 23 FEB 2023