

VOR/DME OKM 114.9 Chan 96	APP CRS 240°	Rwy Idg TDZE Apt Elev	N/A N/A 720
---	------------------------	-----------------------------	--

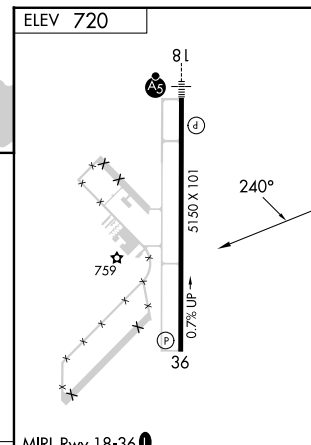
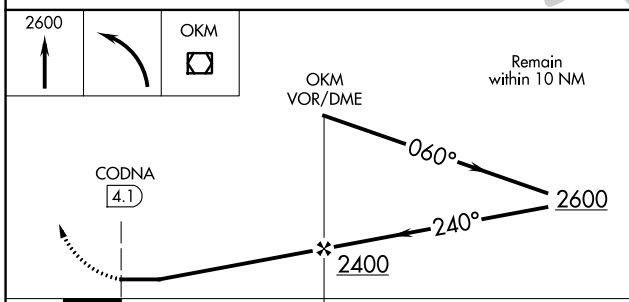
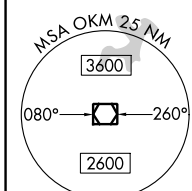
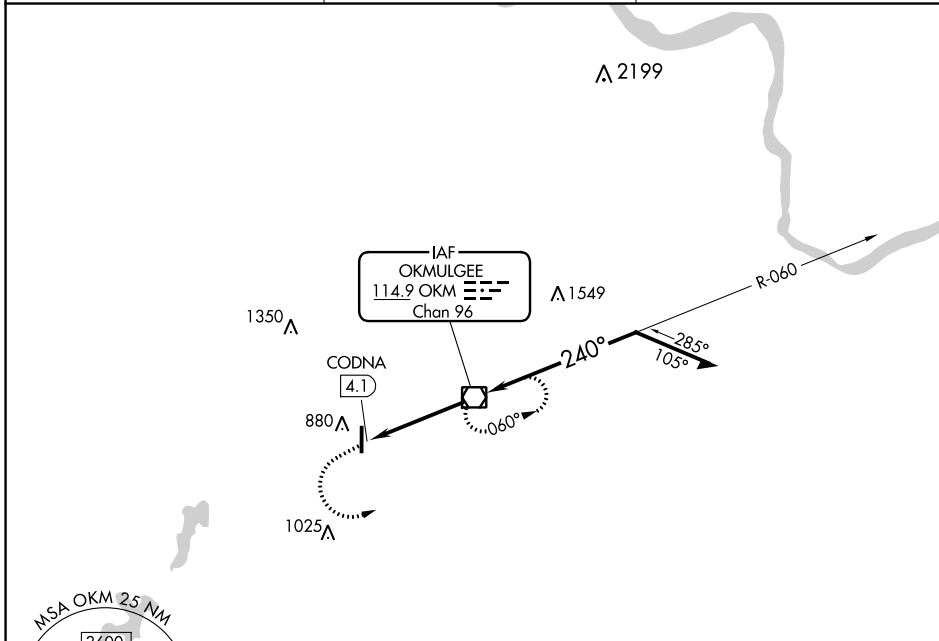
VOR-A

OKMULGEE RGNL/PAUL AND BETTY ABBOTT FLD (OKM)

NA When local altimeter setting not received, use Tulsa Intl altimeter setting: Increase all MDAs 80 feet and visibility Cat C ¼ SM.

MISSED APPROACH: Climb to 2600 then left turn direct OKM VOR/DME and hold.

AWOS-3PT 118.225	TULSA APP CON 119.85 338.3	UNICOM 123.0 (CTAF) 0
----------------------------	--------------------------------------	---------------------------------



CATEGORY	FAF to MAP 4.1 NM			
	A	B	C	D
CIRCLING	1140-1 420 (500-1)	1340-1 620 (700-1)	1340-1¾ 620 (700-1¾)	NA
	Knots: 60	90	120	150
	Min:Sec: 4:06	2:44	2:03	1:38
			180	1:22

VOR-A

SC-1, 26 JAN 2023 to 23 FEB 2023

SC-1, 26 JAN 2023 to 23 FEB 2023