
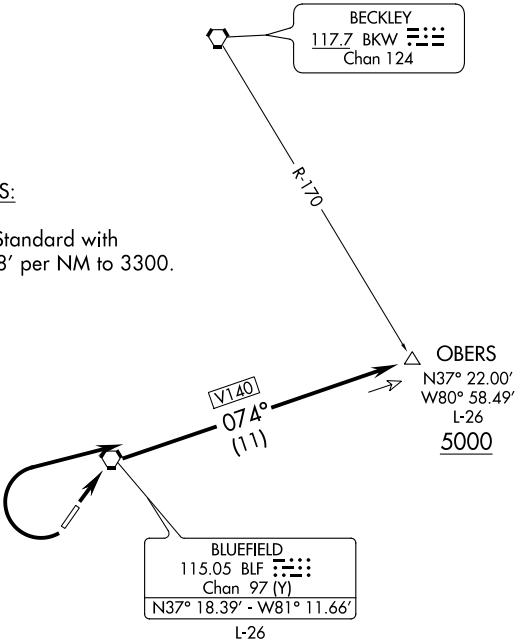


INDANAPOLIS CENTER  
126.575 257.85  
CTAF 122.9   
ASOS 132.725

TOP ALTITUDE:  
ASSIGNED BY ATC

TAKE-OFF MINIMUMS:

Rwy 5: Standard.  
Rwy 23: 400-2¼ or Standard with  
minimum climb of 238' per NM to 3300.



NOTE: Chart not to scale.



DEPARTURE ROUTE DESCRIPTION

TAKE-OFF RUNWAY 5: Climb via BLF R-074 to cross OBERS INT at or  
above 5000' or altitude assigned by ATC. Thence . . . .

TAKE-OFF RUNWAY 23: Climbing right turn via BLF R-074 to cross OBERS INT  
at or above 5000' or altitude assigned by ATC. Thence . . . .

. . . . via ATC assigned route.