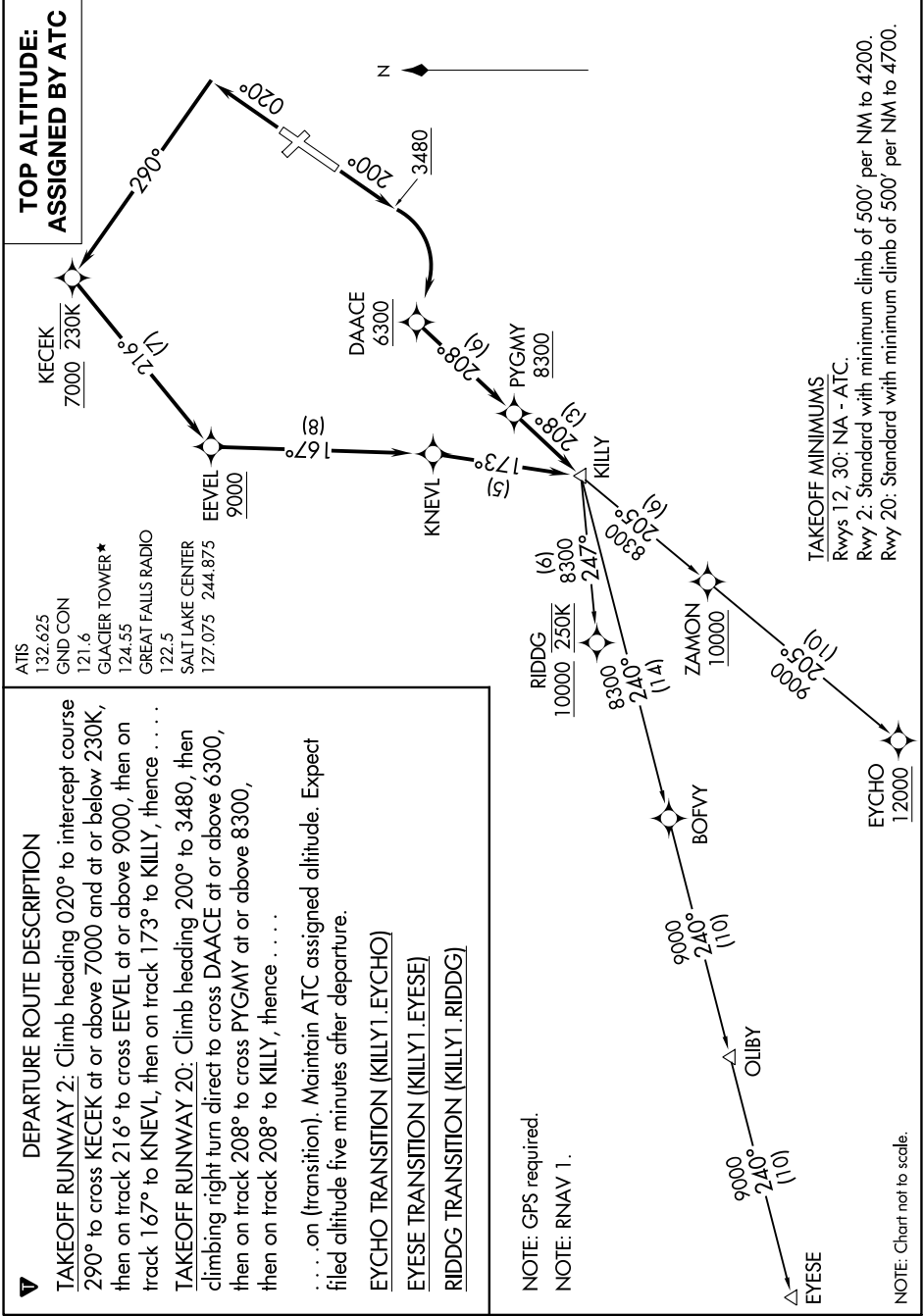


NW-1, 26 JAN 2023 to 23 FEB 2023



DEPARTURE ROUTE DESCRIPTION

TAKEOFF RUNWAY 2: Climb heading 020° to intercept course 290° to cross KECEK at or above 7000 and at or below 230K, then on track 216° to cross EEVEL at or above 9000, then on track 167° to KNEVL, then on track 173° to KILLY, thence . . .

TAKEOFF RUNWAY 20: Climb heading 200° to 3480, then climbing right turn direct to cross DAAACE at or above 6300, then on track 208° to cross PYGMY at or above 8300, then on track 208° to KILLY, thence . . .

. . . on (transition). Maintain ATC assigned altitude. Expect filed altitude five minutes after departure.

EYCHO TRANSITION (KILLY1.EYCHO)
EYESE TRANSITION (KILLY1.EYESE)
RIDDG TRANSITION (KILLY1.RIDDG)

NOTE: GPS required.
 NOTE: RNAV 1.

NOTE: Chart not to scale.

NW-1, 26 JAN 2023 to 23 FEB 2023