

APP CRS	Rwy Idg	9007
200°	TDZE	2977
	Apt Elev	2977

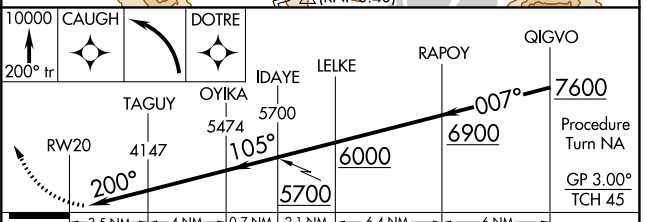
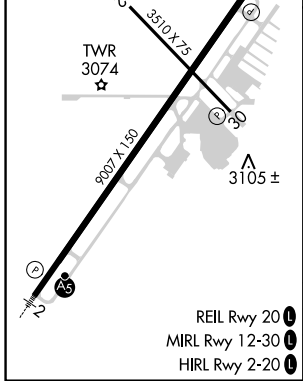
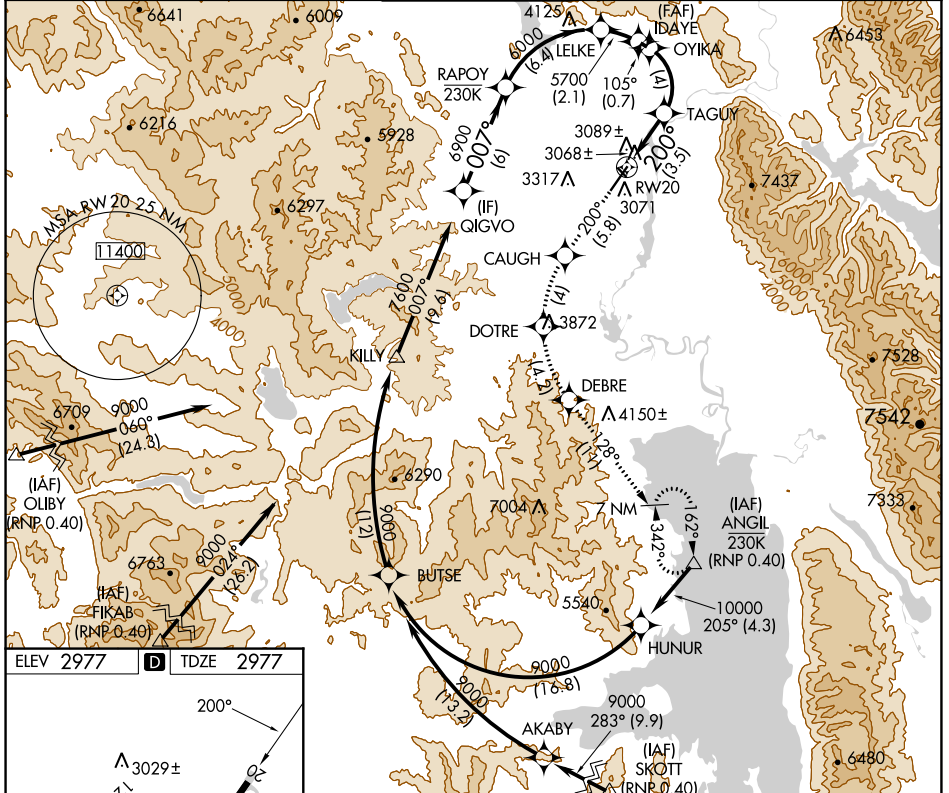
RNAV (RNP) RWY 20

GLACIER PARK INTL (GPI)

RF and GPS required. For uncompensated Baro-VNAV systems, procedure NA below -21°C (-5°F) or above 43°C (109°F).
 Visibility reduction by helicopters NA.
 *Missed approach requires minimum climb of 235 feet per NM to 6900.

MISSED APPROACH: Climb to 10000 via 200° track to CAUGH and via left turn to DOTRE, and via left turn to DEBRE, and via 128° track to ANGL and hold, continue climb-in-hold to 10000.

ATIS	SALT LAKE CENTER	GLACIER TOWER*	GND CON	UNICOM
132.625	127.075 244.875	124.55 (CTAF) 0	121.6	122.95



CATEGORY	A	B	C	D
RNP 0.10 DA*		3344-1¼	367 (400-1¼)	
RNP 0.30 DA*		3446-1¾	469 (500-1¾)	
RNP 0.30 DA		3662-2½	685 (700-2½)	

AUTHORIZATION REQUIRED

NW-1, 26 JAN 2023 to 23 FEB 2023

NW-1, 26 JAN 2023 to 23 FEB 2023