


APP CRS <b>020°</b>	Rwy Idg TDZE Apt Elev	<b>9007</b> <b>2966</b> <b>2977</b>
------------------------	-----------------------------	---

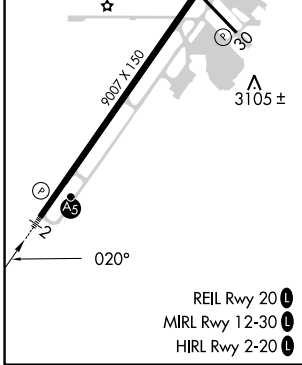
# RNAV (RNP) Y RWY 2

GLACIER PARK INTL (GPI)

**RF and GPS required. Missed approach requires RNP less than 1.0.**  
 For uncompensated Baro-VNAV systems, procedure NA below -21°C (-5°F) or above 43°C (109°F). For inoperative MALS R increase RNP 0.10\* visibility to 1¼ and RNP 0.30 visibility to 2.  
 \*Missed approach requires minimum climb of 220 feet per NM to 6100.

**MALS R**  
  
**MISSED APPROACH:** Climb to 10000 via left turn to JOGAD, and via left turn to TONYU, and via 121° track to WILTO and via 129° track to ANGL and hold.

ATIS <b>132.625</b>	SALT LAKE CENTER <b>127.075 244.875</b>	GLACIER TOWER ★ <b>124.55 (CTAF) ①</b>	GND CON <b>121.6</b>	UNICOM <b>122.95</b>
------------------------	--	---	-------------------------	-------------------------



Procedure Turn NA	JUNRU	WULEX	AVDIH	10000	JOGAD	ROYOG
	8000	7200	6200	5200		
GP 3.00°						
TCH 51						
	3 NM	3.2 NM	7.1 NM	6.7 NM		
CATEGORY	A	B	C	D		
RNP 0.10 DA*	NA		3340-¾	374 (400-¾)		
RNP 0.30 DA	NA		3522-1½	556 (600-1½)		

## AUTHORIZATION REQUIRED

NW-1, 26 JAN 2023 to 23 FEB 2023

NW-1, 26 JAN 2023 to 23 FEB 2023