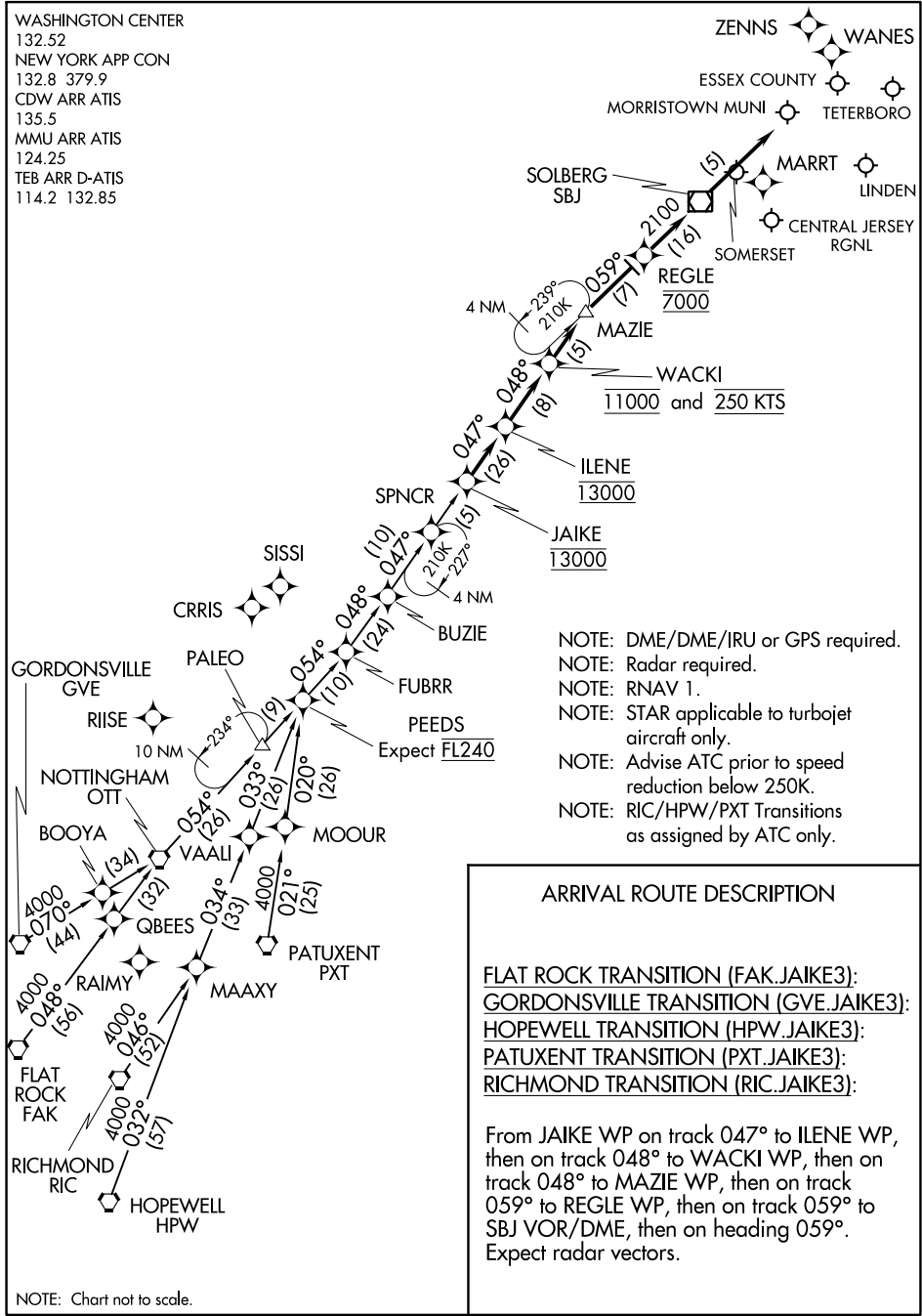


JAIKE THREE ARRIVAL (RNAV)

TETERBORO, NEW JERSEY

WASHINGTON CENTER
132.52
NEW YORK APP CON
132.8 379.9
CDW ARR ATIS
135.5
MMU ARR ATIS
124.25
TEB ARR D-ATIS
114.2 132.85



- NOTE: DME/DME/IRU or GPS required.
- NOTE: Radar required.
- NOTE: RNAV 1.
- NOTE: STAR applicable to turbojet aircraft only.
- NOTE: Advise ATC prior to speed reduction below 250K.
- NOTE: RIC/HPW/PXT Transitions as assigned by ATC only.

ARRIVAL ROUTE DESCRIPTION

FLAT ROCK TRANSITION (FAK.JAIKE3):
GORDONSVILLE TRANSITION (GVE.JAIKE3):
HOPEWELL TRANSITION (HPW.JAIKE3):
PATUXENT TRANSITION (PXT.JAIKE3):
RICHMOND TRANSITION (RIC.JAIKE3):

From JAIKE WP on track 047° to ILENE WP, then on track 048° to WACKI WP, then on track 048° to MAZIE WP, then on track 059° to REGLE WP, then on track 059° to SBJ VOR/DME, then on heading 059°. Expect radar vectors.

NOTE: Chart not to scale.

NE-2, 26 JAN 2023 to 23 FEB 2023

NE-2, 26 JAN 2023 to 23 FEB 2023

JAIKE THREE ARRIVAL (RNAV)

TETERBORO, NEW JERSEY