

WAAS CH <b>86206</b> <b>W35A</b>	APP CRS <b>356°</b>	Rwy Idg TDZE Apt Elev	<b>8002</b> <b>200</b> <b>203</b>
--	------------------------	-----------------------------	---

# RNAV (GPS) RWY 35

VALDOSTA RGNL (VLD)

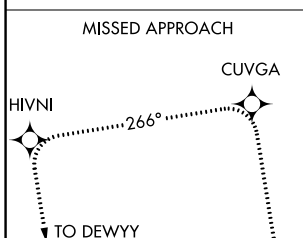
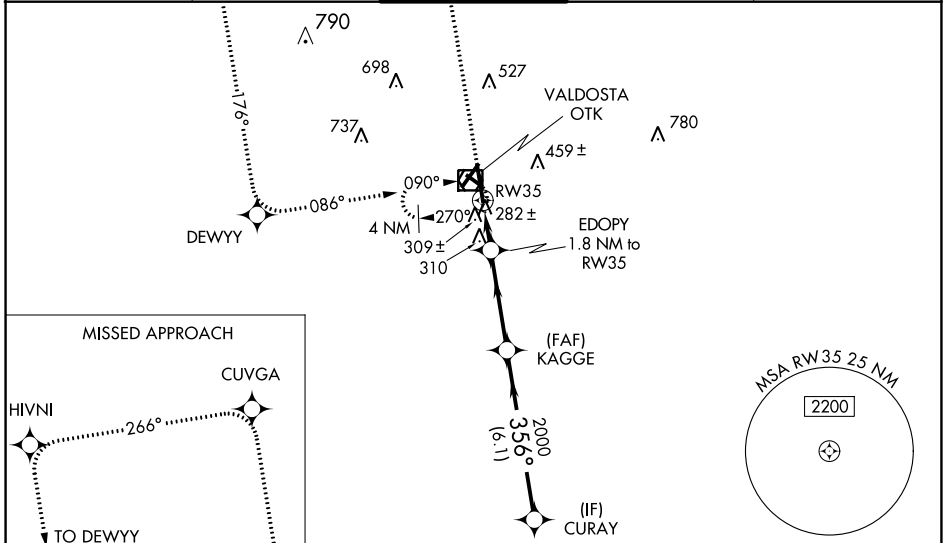
RNP APCH-GPS.

**⚠** Baro-VNAV NA when using Moultrie altimeter setting. For uncompensated Baro-VNAV systems, LNAV/VNAV NA below -15°C or above 54°C. Visibility reduction by helicopters NA. When local altimeter setting not received, use Moultrie altimeter setting: increase LPV DA to 577 feet; increase LNAV/VNAV DA to 697 feet and all visibilities ¼ SM; increase all MDAs 100 feet and visibility Cat C and D ¼ SM. For inop MALSRL, increase LPV all Cats visibility to 1 mile, increase LNAV Cats A, B, and C visibility to 1 mile, and increase LNAV Cat D visibility to 1¼ mile. For inop MALSRL when using Moultrie altimeter setting, increase LNAV Cats A and B visibility to 1 mile. VDP NA when using Moultrie altimeter setting. Circling to Rwy 4, 13, and 31 NA at night.

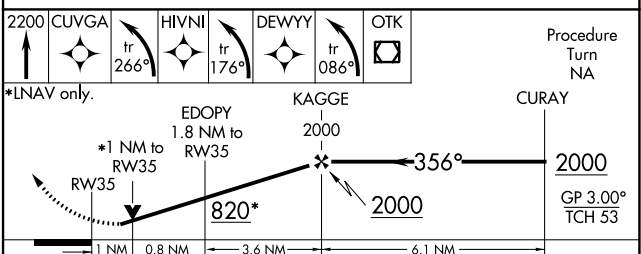
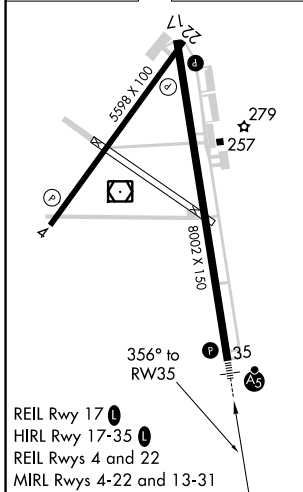
**MISSED APPROACH:**  
Climb to 2200 direct CUVGA and left turn on track 266° to HIVNI and left turn on track 176° to DEWVY left turn on track 086° to OTK VOR/DME and hold.



ASOS <b>126.225</b>	VALDOSTA APP CON * <b>126.6 285.6</b>	VALDOSTA TOWER * <b>120.9 (CTAF) 0</b>	GND CON <b>121.7</b>	UNICOM <b>122.95</b>
------------------------	--	---	-------------------------	-------------------------



ELEV 203	TDZE 200
----------	----------



CATEGORY	A	B	C	D
LPV DA		489-¾	289 (300-¾)	
LNAV/VNAV DA		609-1	409 (500-1)	
LNAV MDA		560-¾	360 (400-¾)	560-1 360 (400-1)
CIRCLING	640-1 437 (500-1)	700-1 497 (500-1)	900-2 697 (700-2)	1020-2¾ 817 (900-2¾)

SE-4, 26 JAN 2023 to 23 FEB 2023

SE-4, 26 JAN 2023 to 23 FEB 2023