

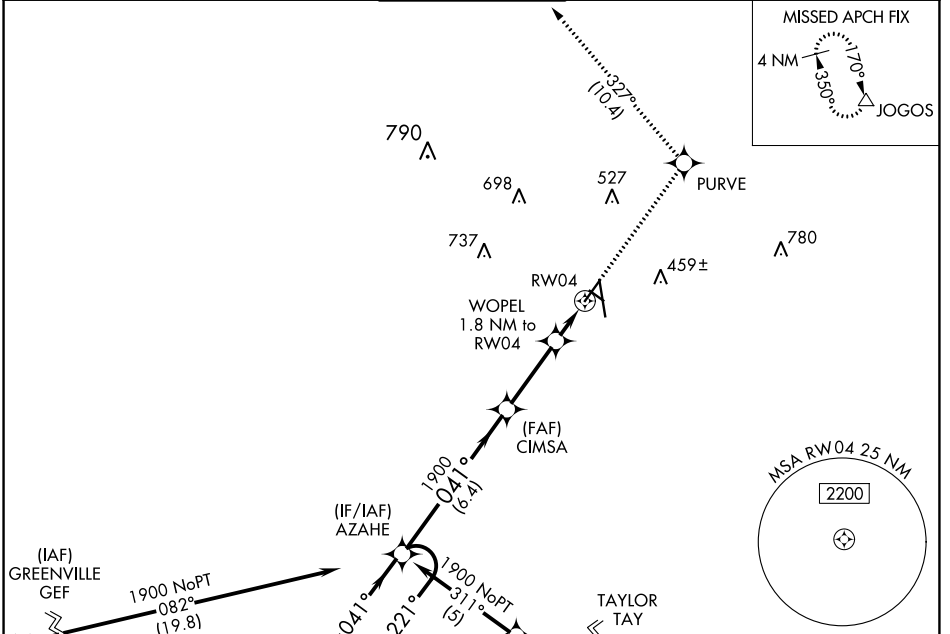
APP CRS	Rwy Idg	<b>5598</b>
<b>041°</b>	TDZE	<b>202</b>
	Apt Elev	<b>203</b>

# RNAV (GPS) RWY 4

VALDOSTA RGNL (VLD)

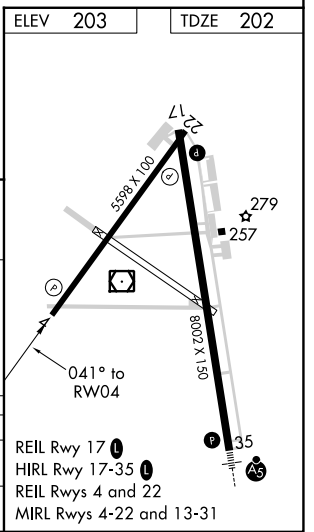
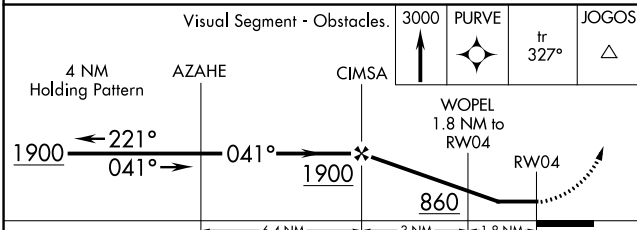
RNP APCH-GPS.				MISSED APPROACH:
<p><b>▼</b> Rwy 4 helicopter visibility reduction below 1 SM NA. When local altimeter setting not received, use Moultrie altimeter setting and increase all MDAs 100 feet and visibility LNAV Cat C and D 3/8 SM and Circling Cat C and D 1/4 SM. Straight-in Rwy 4 NA at night, Circling Rwy 4, 13, 31 NA at night.</p>				<p>Climb to 3000 direct PURVE and on track 327° to JOGOS and hold.</p>

ASOS	VALDOSTA APP CON *	VALDOSTA TOWER *	GND CON	UNICOM
<b>126.225</b>	<b>126.6 285.6</b>	<b>120.9 (CTAF) 0</b>	<b>121.7</b>	<b>122.95</b>



ELEV	203	TDZE	202
------	-----	------	-----

Procedure NA for arrival on GEF VORTAC airway radials 091 CW 145.



CATEGORY	A	B	C	D
LNAV MDA	560-1 358 (400-1)			
CIRCLING	640-1 437 (500-1)	700-1 497 (500-1)	900-2 697 (700-2)	1020-2 <sup>3</sup> / <sub>4</sub> 817 (900-2 <sup>3</sup> / <sub>4</sub> )

REIL Rwy 17  
 HIRL Rwy 17-35  
 REIL Rws 4 and 22  
 MIRL Rws 4-22 and 13-31

SE-4, 26 JAN 2023 to 23 FEB 2023

SE-4, 26 JAN 2023 to 23 FEB 2023