

VOR/DME OTK <b>114.8</b> Chan <b>95</b>	APP CRS <b>190°</b>	Rwy Idg <b>8002</b> TDZE <b>199</b> Apt Elev <b>203</b>
---	------------------------	---

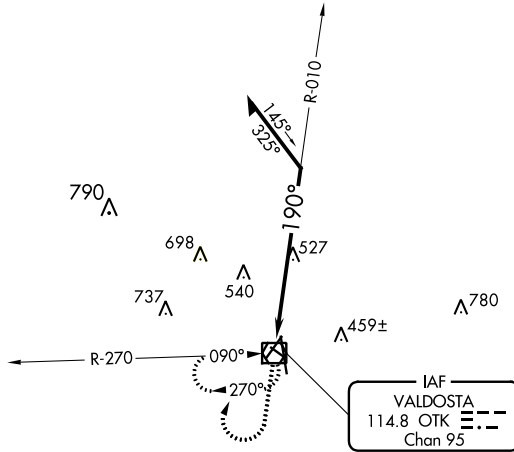
# VOR RWY 17

VALDOSTA RGNL (VLD)

**⚠** Rwy 17 helicopter visibility reduction below ¼ SM NA. VDP NA when using Moultrie altimeter setting. When local altimeter setting not received, use Moultrie altimeter setting and increase all MDAs 100 feet and increase S-17 Cats B/C visibility and Circling Cats B/C/D visibility ¼ SM. Circling Rwy 4, 13, 31 NA at night.

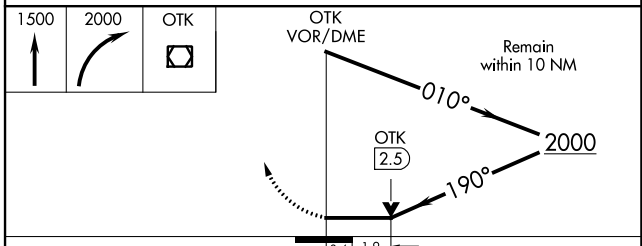
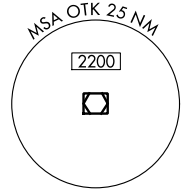
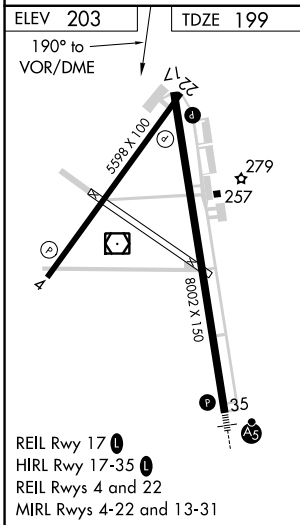
**MISSED APPROACH:** Climb to 1500 then climbing right turn to 2000 direct OTK VOR/DME and hold, continue climb-in-hold to 2000.

ASOS <b>126.225</b>	VALDOSTA APP CON * <b>126.6 285.6</b>	VALDOSTA TOWER * <b>120.9 (CTAF)</b> <b>📻</b>	GND CON <b>121.7</b>	UNICOM <b>122.95</b>
------------------------	--	--	-------------------------	-------------------------



SE-4, 26 JAN 2023 to 23 FEB 2023

SE-4, 26 JAN 2023 to 23 FEB 2023



CATEGORY	A	B	C	D
S-17	840-1 641 (700-1)		840-1¾ 641 (700-1¾)	840-2 641 (700-2)
CIRCLING	840-1 637 (700-1)		900-2 697 (700-2)	1020-2¾ 817 (900-2¾)