

WAAS CH 42932 W19A	APP CRS 190°	Rwy Idg 5546 TDZE 521 Apt Elev 543
--	------------------------	---

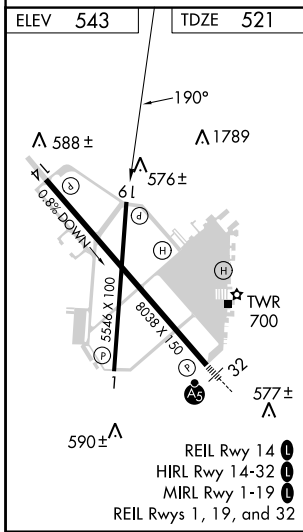
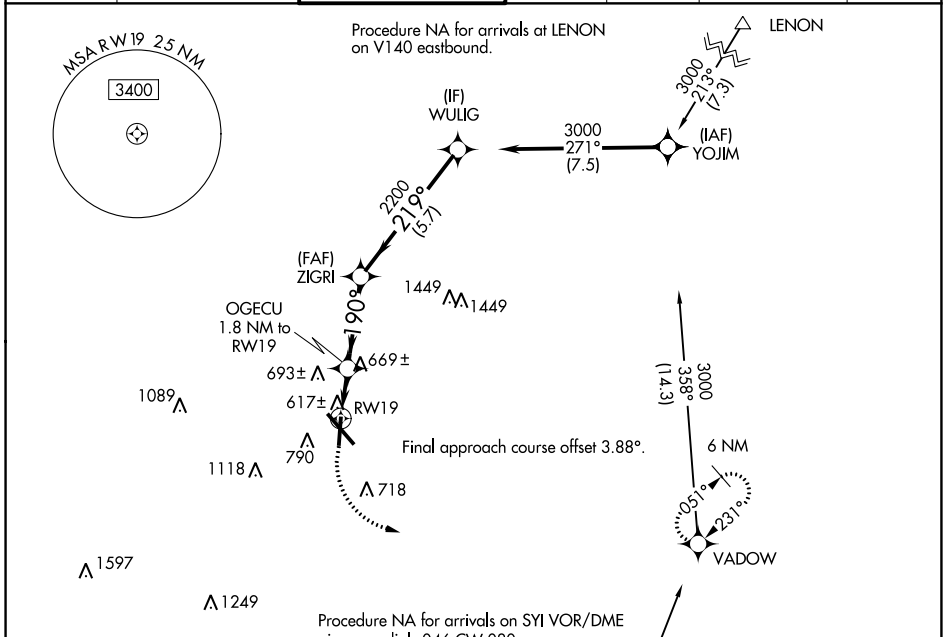
RNAV (GPS) RWY 19

SMYRNA (MQY)

⚠ DME/DME RNP-0.3 NA. Helicopter visibility reduction below 3/4 SM NA.
 When local altimeter setting not received, use Nashville Intl altimeter setting and increase all MDA 40 feet and increase LP and LNAV Cat C/D visibility 1/8 mile.

MISSED APPROACH: Climb to 1000 then climbing left turn to 3000 direct VADOW and hold.

AWOS-3PT 119.125	NASHVILLE APP CON 118.4 360.7	SMYRNA TOWER ★ 118.5 (CTAF) 233.1	GND CON 121.4	CLNC DEL 121.4	CLNC DEL 121.7 (When twr closed)	UNICOM 122.95
----------------------------	---	---	-------------------------	--------------------------	---	-------------------------



ELEV 543	TDZE 521	VADOW		VGSI and descent angles not coincident (VGSI Angle 3.50/TCH 32).	WULIG
1000	3000	1.8 NM	3.3 NM	5.7 NM	3000
1140	2200				
1100-1	1200-1	1240-2	1480-3		
557 (600-1)	657 (700-1)	697 (700-2)	937 (1000-3)		

SE-1, 26 JAN 2023 to 23 FEB 2023

SE-1, 26 JAN 2023 to 23 FEB 2023

RNAV (GPS) RWY 19