

LOC/DME I-BSC 111.75 Chan 54(Y)	APP CRS 149°	Rwy Idg TDZE 151 Apt Elev 151
---	------------------------	---

ILS RWY 15

TED STEVENS ANCHORAGE INTL (ANC) (PANC)

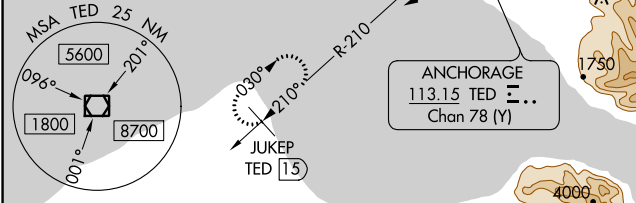
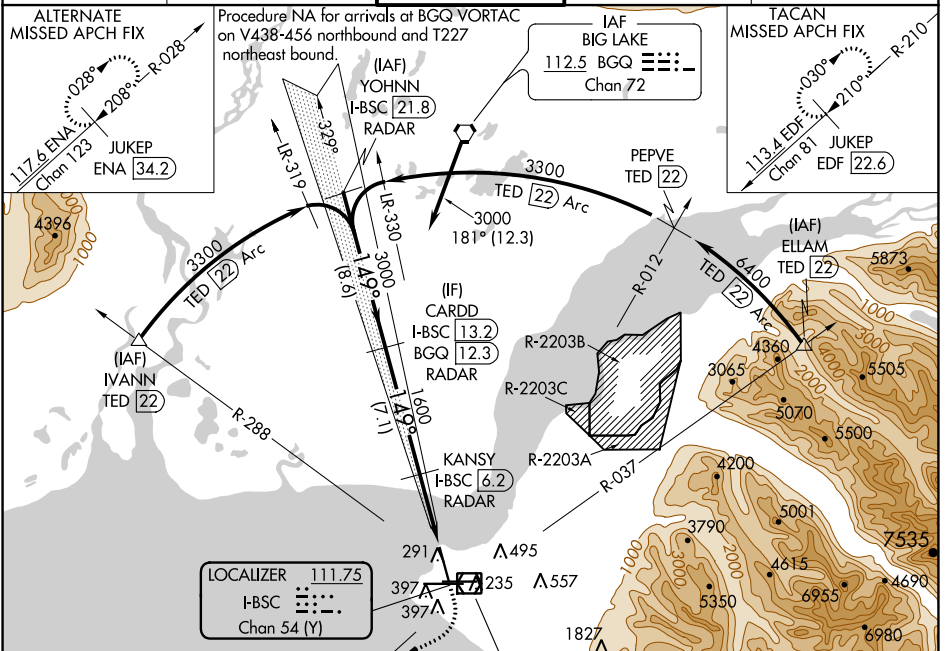
DME required.

Inop table does not apply.

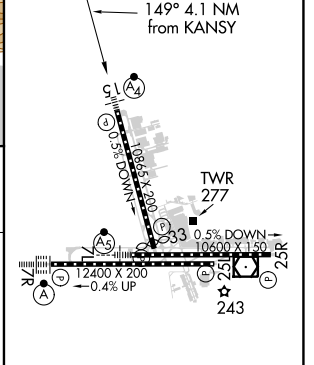
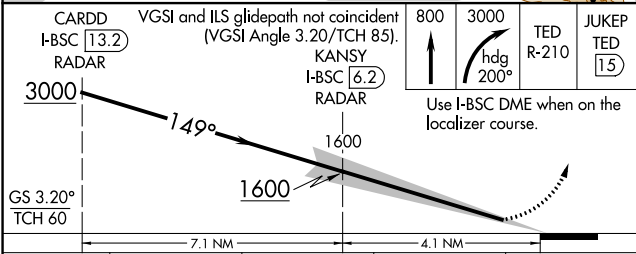
MALSF

MISSED APPROACH: Climb to 800 then climbing right turn to 3000 on heading 200° and TED VOR/DME R-210 to JUKEP/TED 15 DME and hold. (TACAN aircraft climb to 800 then climbing right turn to 3000 on heading 200 and on EDF TACAN R-210 to JUKEP/EDF 22.6 DME and hold

D-ATIS 135.5	ANCHORAGE APP CON 118.6 290.5	ANCHORAGE TOWER 118.3 257.8	GND CON 121.9 338.25	CLNC DEL 119.4 323.1
------------------------	---	---------------------------------------	--------------------------------	--------------------------------



ELEV 151	TDZE 151
----------	----------



CATEGORY	A	B	C	D
S-ILS 15	351/40	200 (200-¾)	401/40	250 (300-¾)

REIL Rwy 33
TDZ/CL Rwy 7L and 7R
HIRL all Rwy

AK, 29 DEC 2022 to 23 FEB 2023

AK, 29 DEC 2022 to 23 FEB 2023