

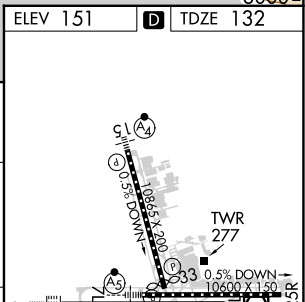
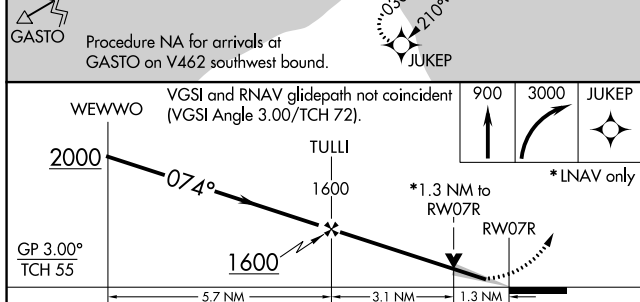
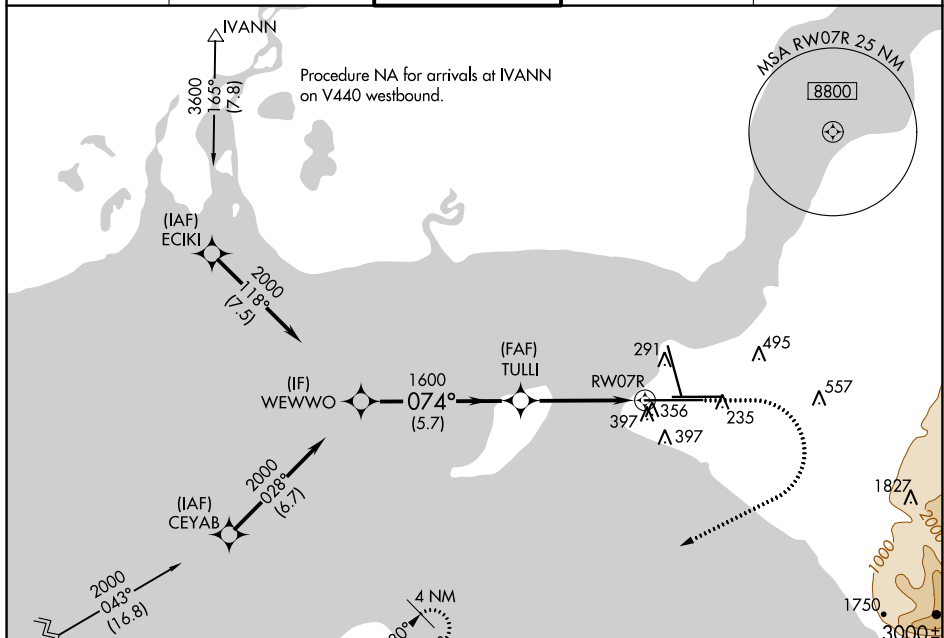
WAAS CH 81815 W07A	APP CRS 074°	Rwy Idg 12400 TDZE 132 Apt Elev 151
--	------------------------	--

RNAV (GPS) Y RWY 7R

TED STEVENS ANCHORAGE INTL (ANC) (PANC)

RNP APCH.	ALSF-2	MISSED APPROACH: Climb to 900 then climbing right turn to 3000 direct JUKEP and hold.
<p>▼ For uncompensated Baro-VNAV systems, LNAV/VNAV NA below -18°C or above 54°C. For inop ALS, increase LNAV/VNAV all Cats and LNAV Cat C/D visibility to 1½ SM.</p>		

D-ATIS 135.5	ANCHORAGE APP CON 118.6 290.5	ANCHORAGE TOWER 118.3 257.8	GND CON 121.9 338.25	CLNC DEL 119.4 323.1
------------------------	---	---------------------------------------	--------------------------------	--------------------------------



CATEGORY	A	B	C	D
LPV DA		332/18	200 (200-½)	
LNAV/VNAV DA		648/55	516 (500-1)	
LNAV MDA	620/24	488 (500-½)	620/50	488 (500-1)
CIRCLING	700-1	549 (600-1)	800-1¾ 649 (700-1¾)	920-2½ 769 (800-2½)

ELEV 151	TDZE 132
<p>REIL Rwy 33 TDZ/CL Rws 7L and 7R HIRL all Rws</p>	

AK, 29 DEC 2022 to 23 FEB 2023

AK, 29 DEC 2022 to 23 FEB 2023