

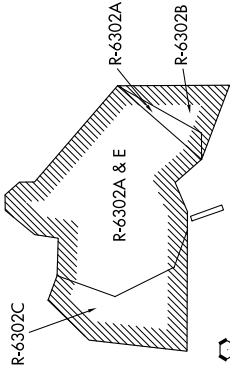
# CONRA TWO DEPARTURE

SC-3, 26 JAN 2023 to 23 FEB 2023

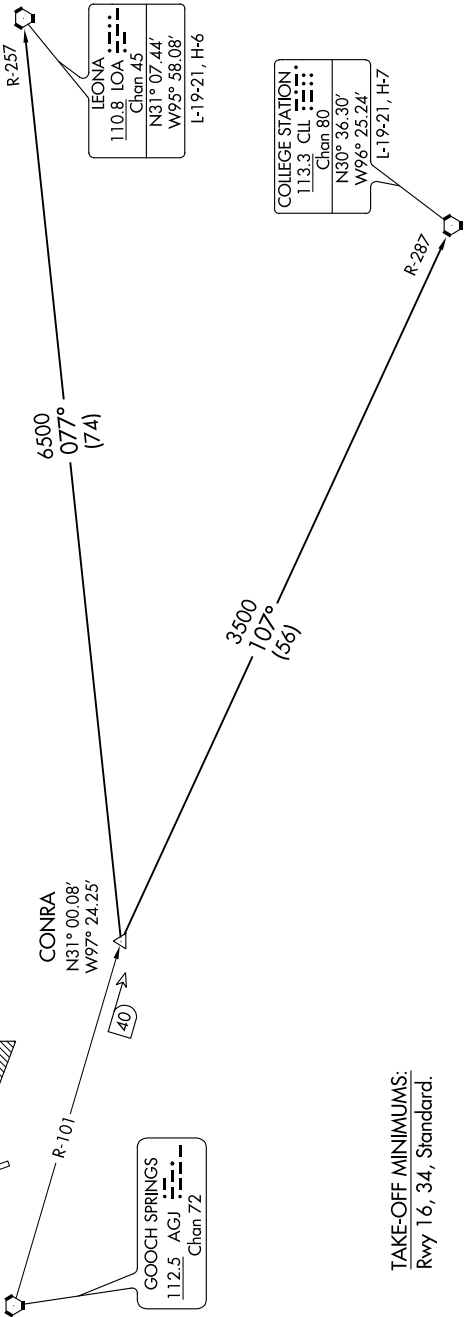
**TOP ALTITUDE:  
12000**

CINC DEL  
225.4  
GND CON  
133.85 225.4  
HOOD TOWER ★  
119.65 269.45  
GRAY DEP CON  
120.075 323.15

**DEPARTURE ROUTE DESCRIPTION**  
Climb on assigned heading for RADAR vectors to CONRA INT, maintain 3500. Thence . . . .  
. . . . (transition). Expect filed altitude 10 minutes after departure.  
**COLLEGE STATION TRANSITION (CONRA2.CLL):** From over CONRA INT via CLL R-287 to CLL VORTAC.  
**LEONA TRANSITION (CONRA2.LOA):** From over CONRA INT via LOA R-257 to LOA VORTAC.



NOTE: RADAR required.



LEONA	
110.8 LOA	Chan 45
N31° 07.44'	
W95° 58.08'	
L-19-21, H-6	

COLLEGE STATION	
113.3 CLL	Chan 80
N30° 36.30'	
W96° 25.24'	
L-19-21, H-7	

**TAKE-OFF MINIMUMS:**  
Rwy 16, 34, Standard.

NOTE: Chart not to scale.

# CONRA TWO DEPARTURE

SC-3, 26 JAN 2023 to 23 FEB 2023