

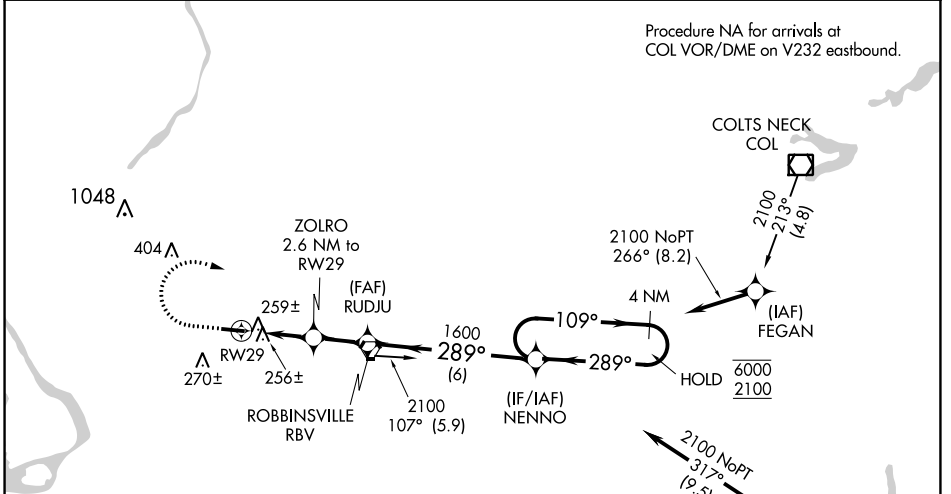
APP CRS	Rwy Idg	<b>3975</b>
<b>289°</b>	TDZE	<b>118</b>
	Apt Elev	<b>118</b>

# RNAV (GPS) RWY 29

TRENTON-ROBBINSVILLE (N87)

RNP APCH.	MISSED APPROACH: Climb to 1000, then climbing right turn to 2100 direct NENNO and hold.
<p>Procedure NA at night. Rwy 29 helicopter visibility reduction below 1 SM NA. Use Wrightstown altimeter setting.</p>	

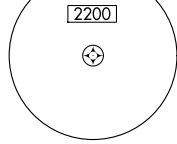
MC GUIRE APP CON <b>126.475 363.8</b>	UNICOM <b>123.0 (CTAF)</b>	<b>123.3 0</b>
--	-------------------------------	----------------



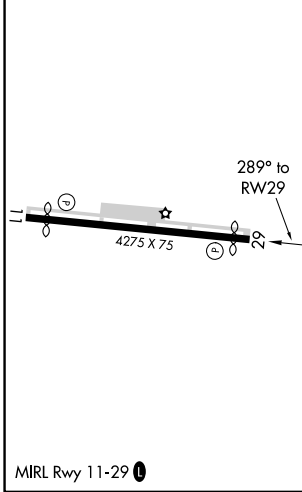
Procedure NA for arrivals at COL VOR/DME on V232 eastbound.

Procedure NA for arrivals on RBV VORTAC airway radials 024 CW 122.

MSA RWY 29 25 NM



ELEV 118	TDZE 118
----------	----------



1000	2100	NENNO	Visual Segment - Obstacles.	
↑	↷	✦	NENNO	4 NM Holding Pattern
CATEGORY	A	B	C	D
LNAV MDA	540-1	422 (500-1)	540-1½	422 (500-1½)
CIRCLING	680-1	562 (600-1)	680-1½ 562 (600-1½)	760-2 642 (700-2)

NE-2, 26 JAN 2023 to 23 FEB 2023

NE-2, 26 JAN 2023 to 23 FEB 2023