

WAAS CH 72723 W10A	APP CRS 103°	Rwy Idg TDZE Apt Elev	5402 547 547
----------------------------------------	------------------------	-----------------------------	-----------------------------------------

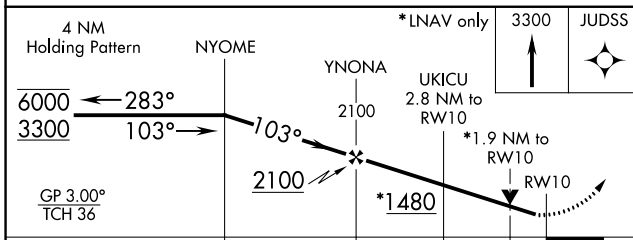
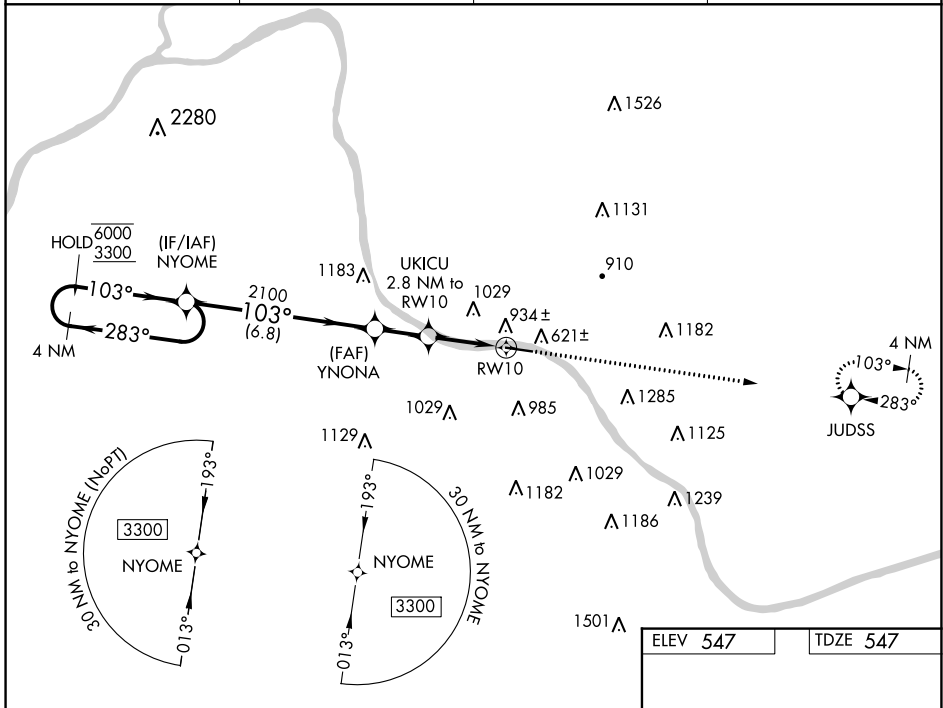
RNAV (GPS) RWY 10

ASHLAND RGNL (DWU)

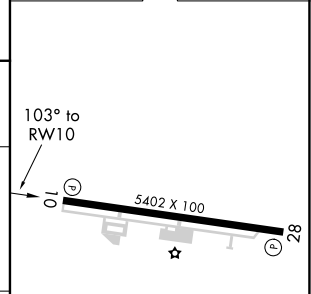
RNP APCH.
 ▼ Rwy 10 helicopter visibility reduction below 3/4 SM NA. For uncompensated Baro-VNAV systems, LNAV/VNAV NA below -16°C or above 54°C.

MISSED APPROACH: Climb to 3300 direct JUDSS and hold, continue climb-in-hold to 3300.

AWOS-3PT 132.425	HUNTINGTON APP CON 128.4 270.1	CLNC DEL 121.7	UNICOM 122.8 (CTAF)
----------------------------	------------------------------------------	--------------------------	-------------------------------



ELEV 547	TDZE 547
----------	----------



CATEGORY	A	B	C	D
LPV DA		799-1	252 (300-1)	
LNAV/VNAV DA		1095-1 5/8	548 (600-1 5/8)	
LNAV MDA	1200-1	653 (700-1)	1200-1 7/8	653 (700-1 5/8)
CIRCLING	1300-1 753 (800-1)	1380-1 1/4 833 (900-1 1/4)	1380-2 1/2 833 (900-2 1/2)	1420-2 3/4 873 (900-2 3/4)

675±
▲
MIRL Rwy 10-28
REIL Rwy 10 and 28

SE-1, 26 JAN 2023 to 23 FEB 2023

SE-1, 26 JAN 2023 to 23 FEB 2023