

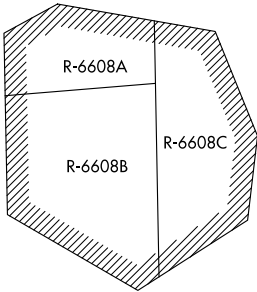
CAVLR FOUR ARRIVAL (RNAV)

AL-5100 (FAA)

WASHINGTON DULLES INTL (IAD)
WASHINGTON, DC

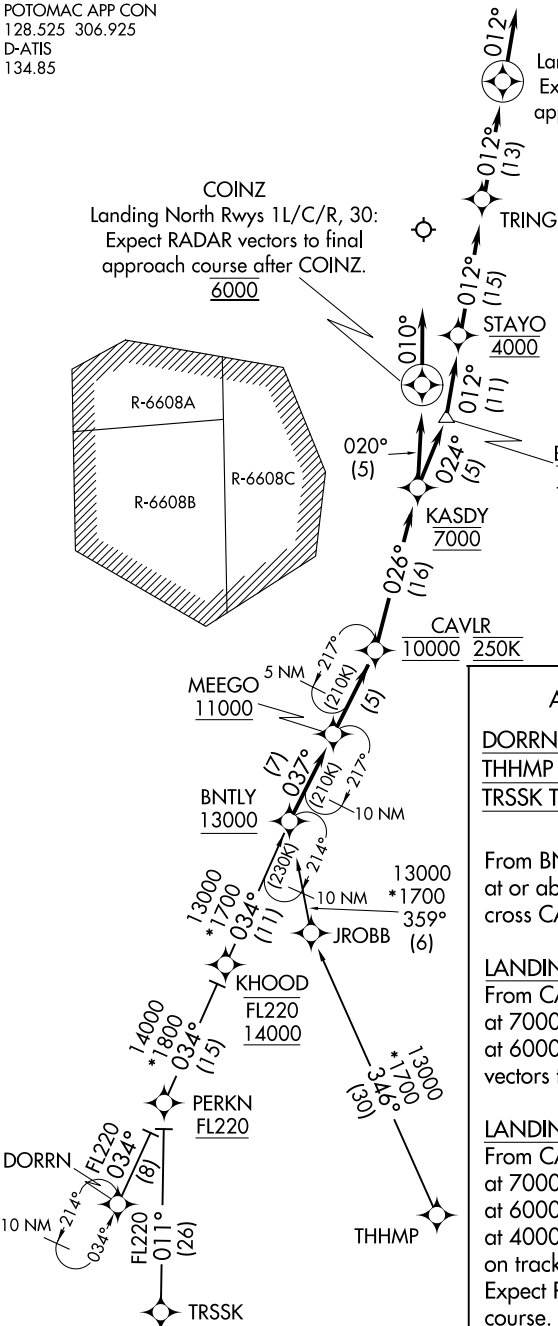
POTOMAC APP CON
128.525 306.925
D-ATIS
134.85

COINZ
Landing North Rwys 1L/C/R, 30:
Expect RADAR vectors to final
approach course after COINZ.
6000



MIXNN
Landing South Rwys 19L/C/R:
Expect RADAR vectors to final
approach course after MIXNN.

- NOTE: RADAR required.
NOTE: RNAV 1.
NOTE: DME/DME/IRU or GPS required.
NOTE: Turbojet aircraft only.
NOTE: ARTCC will issue landing
direction assignment (North or
South) and Potomac TRACON
will issue runway assignments.



NOTE: Chart not to scale.

ARRIVAL ROUTE DESCRIPTION

- DORRN TRANSITION (DORRN.CAVLR4)
THHMP TRANSITION (THHMP.CAVLR4)
TRSSK TRANSITION (TRSSK.CAVLR4)

From BNTLY on track 037° to cross MEEGO
at or above 11000, then on track 037° to
cross CAVLR at 10000 and at 250K.

LANDING RUNWAYS 1L/C/R, 30:
From CAVLR on track 026° to cross KASDY
at 7000, then on track 020° to cross COINZ
at 6000, then on track 010°. Expect RADAR
vectors to final approach course.

LANDING RUNWAYS 19L/C/R:
From CAVLR on track 026° to cross KASDY
at 7000, then on track 024° to cross BARIN
at 6000, then on track 012° to cross STAYO
at 4000, then on track 012° to TRING, then
on track 012° to MIXNN, then on track 012°.
Expect RADAR vectors to final approach
course.

CAVLR FOUR ARRIVAL (RNAV)