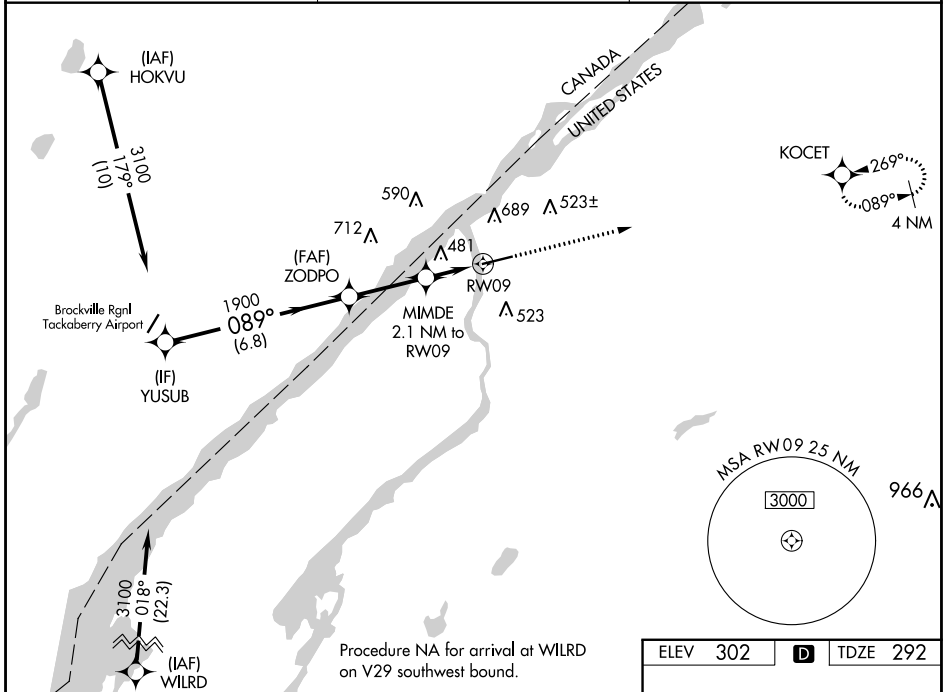


WAAS CH <b>69528</b> <b>W09A</b>	APP CRS <b>089°</b>	Rwy Idg TDZE <b>292</b> Apt Elev <b>302</b>	<b>6006</b>
--	------------------------	---	-------------

# RNAV (GPS) RWY 9

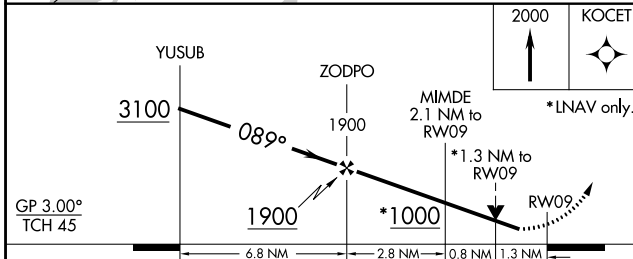
OGDENSBURG INTL (OGS)

RNP APCH.		MISSED APPROACH: Climb to 2000 direct KOCET and hold.
<p><b>▽</b> Rwy 9 helicopter visibility reduction below 3/4 SM NA. For uncompensated Baro-VNAV systems, LNAV/VNAV NA below -15°C or above 54°C.</p>		
AWOS-3 <b>118,525</b>	BOSTON CENTER <b>135.25 377.1</b>	UNICOM <b>122.8 (CTAF) 0</b>



NE-2, 26 JAN 2023 to 23 FEB 2023

NE-2, 26 JAN 2023 to 23 FEB 2023



ELEV 302	<b>D</b> TDZE 292
----------	-------------------

CATEGORY	A	B	C	D
LPV DA		543-3/4	251 (300-3/4)	
LNAV/VNAV DA		781-13/8	489 (500-13/8)	
LNAV MDA	740-1	448 (500-1)	740-13/8	448 (500-13/8)
<b>C</b> CIRCLING	760-1 458 (500-1)	1000-1 698 (700-1)	1000-2 698 (700-2)	1000-21/4 698 (700-21/4)

