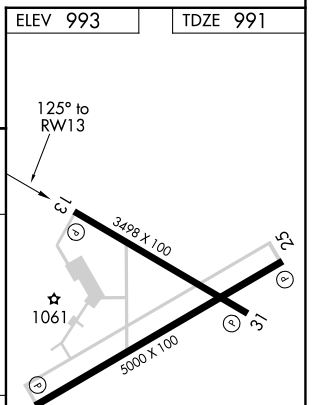
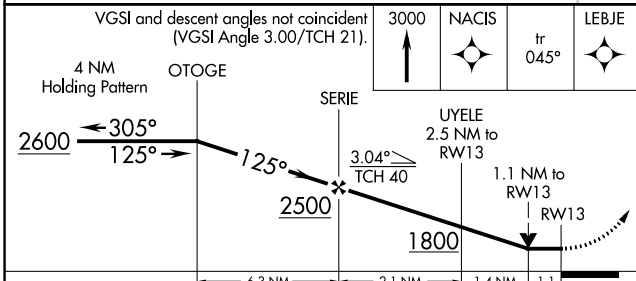
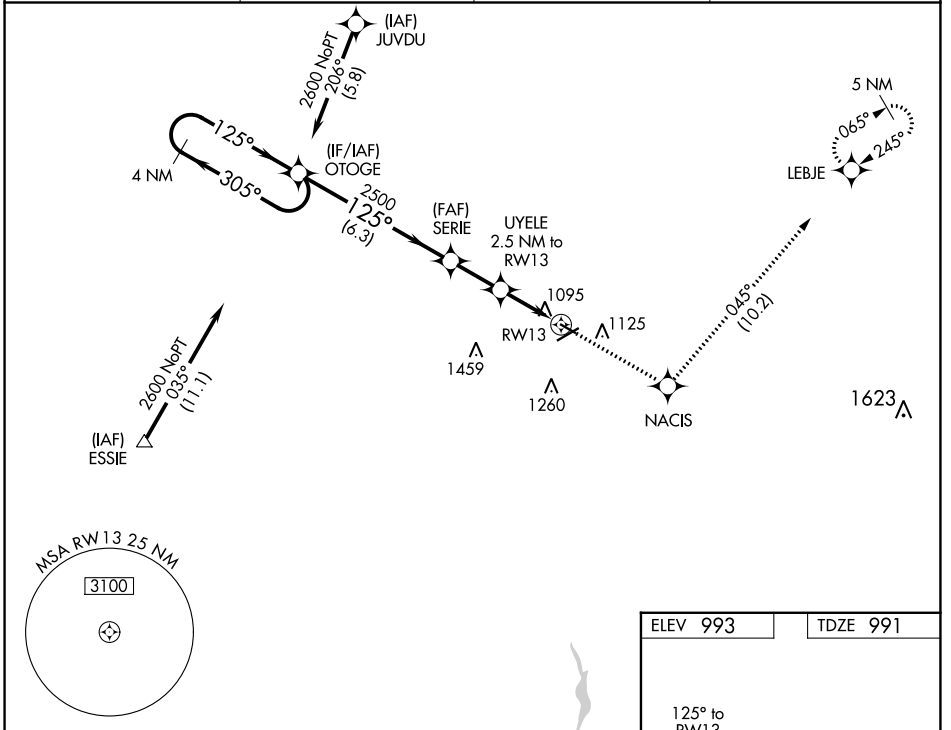


APP CRS	Rwy Idg	3498
125°	TDZE	991
	Apt Elev	993

RNAV (GPS) RWY 13

MARION MUNI (MNN)

RNP APCH.		MISSED APPROACH: Climb to 3000 direct NACIS and on track 045° to LEBJE and hold.	
<p>▼ Rwy 13 helicopter visibility reduction below ¾ SM NA. VDP NA when using Ohio State University altimeter setting. When local altimeter setting not received, use Ohio State University altimeter setting: increase all MDAs 100 feet and visibility Cat C/D ¾ SM.</p>			
ASOS	CLEVELAND APP CON *	CLNC DEL	UNICOM
119.975	124.2 360.65	126.8	122.8 (CTAF) 0



CATEGORY	A	B	C	D
LNVA MDA	1360-1 369 (400-1)		1360-1¼ 369 (400-1¼)	
CIRCLING	1480-1 487 (500-1)	1500-1 507 (600-1)	1700-2 707 (800-2)	1820-2¾ 827 (900-2¾)

REIL Rwy 7, 13, 25 and 31 0
MIRL Rwy 7-25 and 13-31 0

EC-2, 26 JAN 2023 to 23 FEB 2023

EC-2, 26 JAN 2023 to 23 FEB 2023