

WAAS CH <b>61107</b> <b>W13A</b>	APP CRS <b>132°</b>	Rwy Idg TDZE Apt Elev	<b>3498</b> <b>827</b> <b>827</b>
--	------------------------	-----------------------------	---

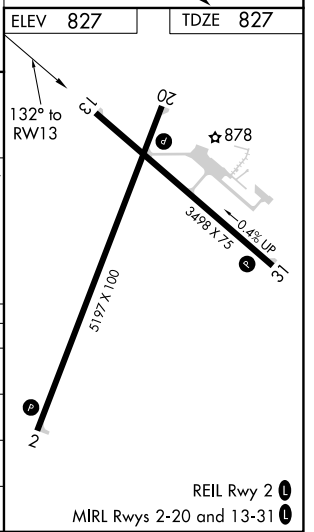
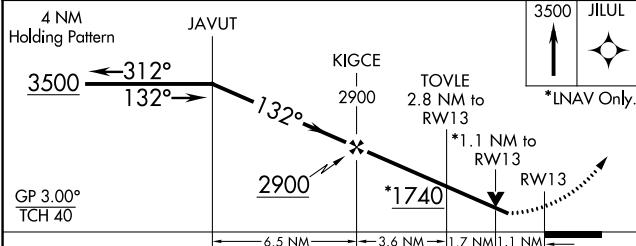
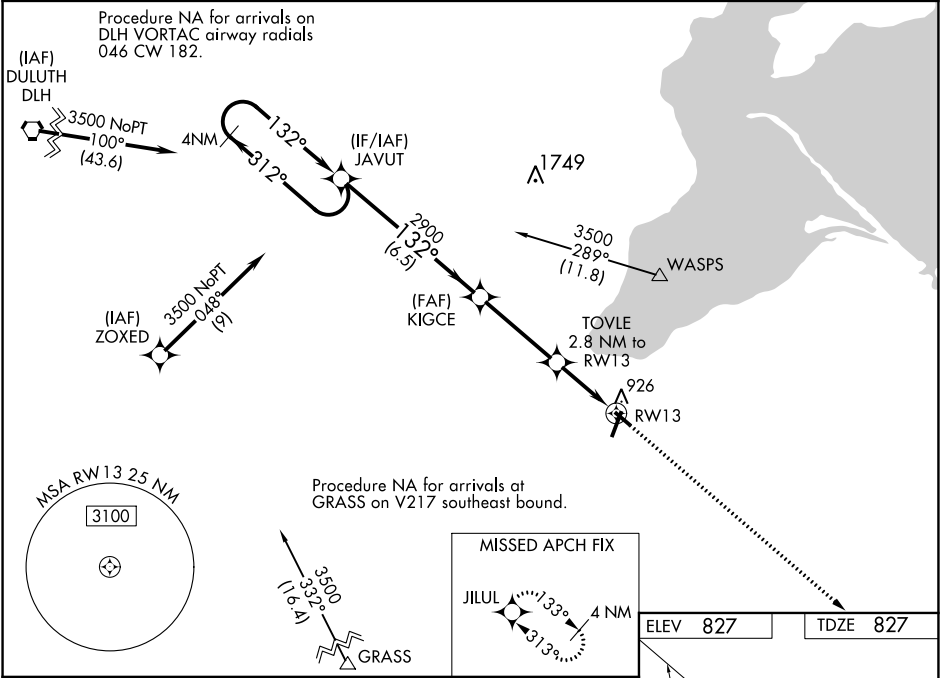
# RNAV (GPS) RWY 13

JOHN F KENNEDY MEML (ASX)

**⚠** For uncompensated Baro-VNAV systems, LNAV/VNAV NA below -28°C (-18°F) or above 54°C (130°F). DME/DME RNP-0.3 NA. Helicopter visibility reduction below 3/4 SM NA. Baro-VNAV and VDP NA when using Ironwood altimeter setting. When local altimeter setting not received, use Ironwood altimeter setting and increase all DAs 132 feet and all MDAs 140 feet; increase LPV, LNAV/VNAV all Cats, and LNAV Cat C/D visibility 3/8 mile and Circling Cat C/D visibility 1/2 mile.

**MISSED APPROACH:**  
Climb to 3500 direct JILUL and hold.

ASOS <b>126.775</b>	MINNEAPOLIS CENTER <b>126.45 276.4</b>	GCO <b>122.25</b>	UNICOM <b>122.8 (CTAF) 0</b>
------------------------	---	----------------------	---------------------------------



CATEGORY	A	B	C	D
LPV DA		1077-7/8	250 (300-7/8)	
LNAV/ VNAV DA		1110-1	283 (300-1)	
LNAV MDA		1200-1	373 (400-1)	
CIRCLING	1240-1	1280-1	1440-1 1/4	1560-2 1/4
	413 (500-1)	453 (500-1)	613 (700-1 3/4)	733 (800-2 1/4)

EC-3, 26 JAN 2023 to 23 FEB 2023

EC-3, 26 JAN 2023 to 23 FEB 2023