

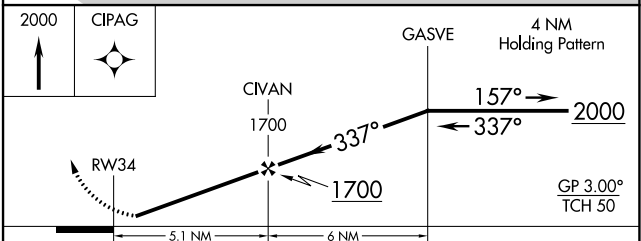
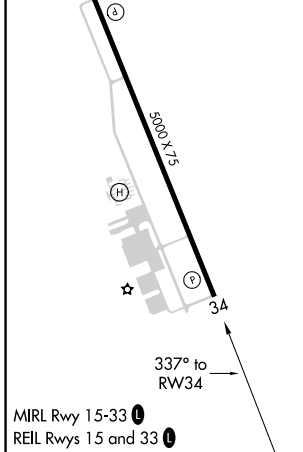
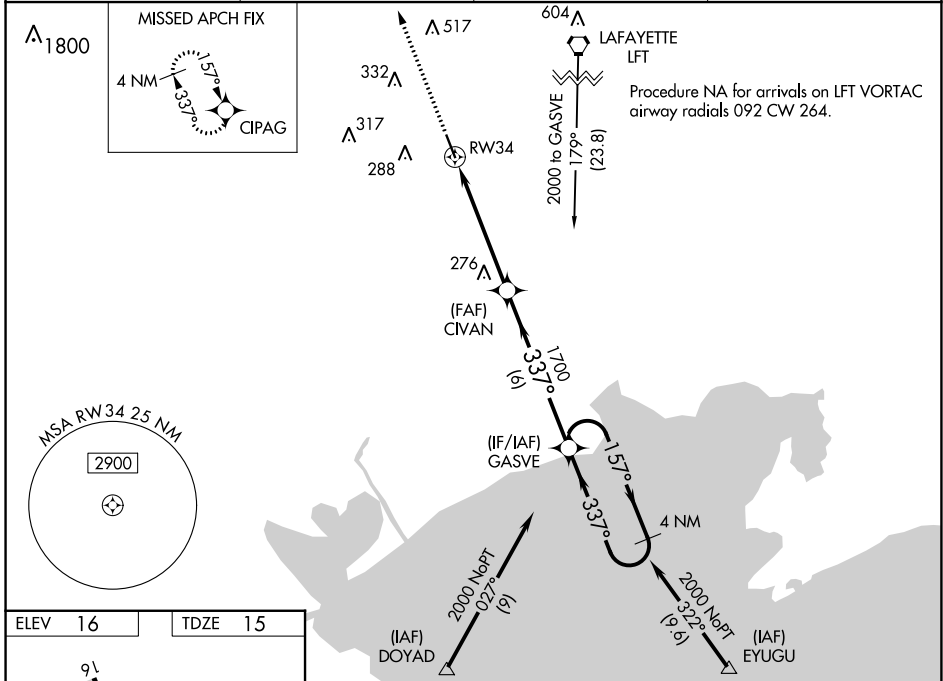
WAAS CH 45823 W34A	APP CRS 337°	Rwy Idg TDZE Apt Elev	5000 15 16
--	------------------------	-----------------------------	---------------------------------------

RNAV (GPS) RWY 34

ABBEVILLE CHRIS CRUSTA MEML (IYA)

RNP APCH.	<p>Baro-VNAV NA when using New Iberia altimeter setting. For uncompensated Baro-VNAV systems, LNAV/VNAV NA below -15°C (5°F) or above 54°C (130°F). Helicopter visibility reduction below ¾ SM NA. When local altimeter setting not received, use New Iberia altimeter setting and increase all DA 27 feet and all MDA 40 feet; increase LNAV/VNAV all Cats visibility 1/8 SM.</p>	MISSED APPROACH: Climb to 2000 direct CIPAG and hold.
-----------	--	--

AWOS-3 118.875	LAFAYETTE APP CON ★ 121.1 268.7	GCO 135.075	UNICOM 122.8 (CTAF)
--------------------------	---	-----------------------	-------------------------------



CATEGORY	A	B	C	D
LPV DA		298-1	283 (300-1)	NA
LNAV/VNAV DA		320-1	305 (400-1)	NA
LNAV MDA	580-1	565 (600-1)	580-1½ 565 (600-1½)	NA
C CIRCLING	580-1 564 (600-1)	600-1 584 (600-1)	700-2 684 (700-2)	NA

SC-4, 26 JAN 2023 to 23 FEB 2023

SC-4, 26 JAN 2023 to 23 FEB 2023