

WAAS CH <b>63217</b> <b>W32A</b>	APP CRS <b>315°</b>	Rwy Idg <b>4800</b> TDZE <b>356</b> Apt Elev <b>358</b>
--	------------------------	---

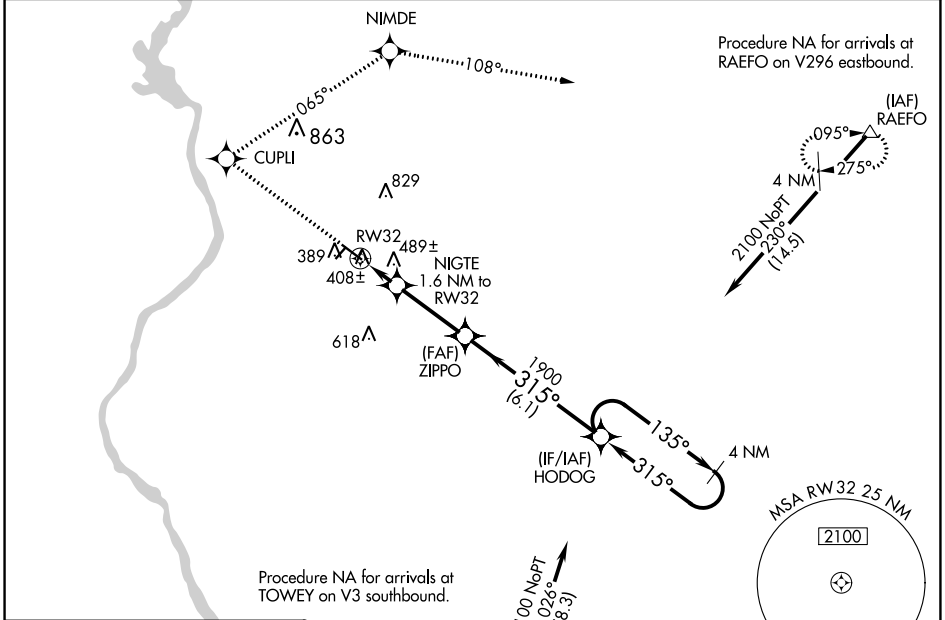
# RNAV (GPS) RWY 32

RICHMOND COUNTY (R/CZ)

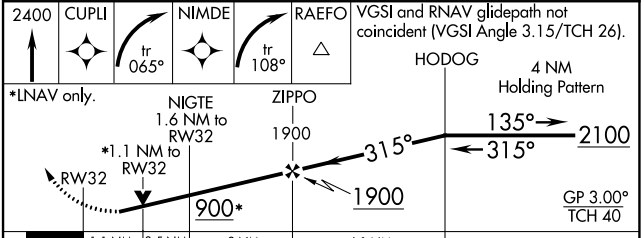
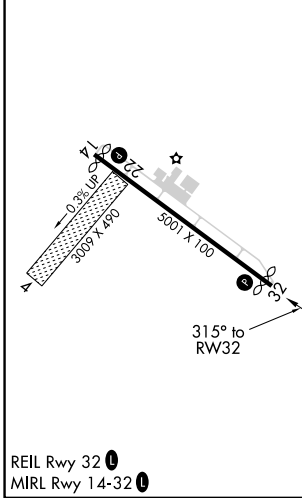
**⚠** Baro-VNAV and VDP NA when using MacKall AAF altimeter setting. For uncompensated Baro-VNAV systems, LNAV/VNAV NA below -15°C (5°F) or above 48°C (118°F). DME/DME RNP-0.3 NA. Rwy 32 helicopter visibility reduction below 3/4 SM NA. When local altimeter setting not received, use MacKall AAF altimeter setting and increase all DA 39 feet and all MDA 40 feet and increase LNAV Cat C visibility 3/8 SM. Circling Rwy 14 NA at night. Circling NA to Rwys 4 and 22.

**MISSED APPROACH:** Climb to 2400 direct CUPLI and right turn on track 065° to NIMDE and on track 108° to RAEFO and hold.

AWOS-3 <b>118.775</b>	FAYETTEVILLE APP CON <b>127.8 343.725</b>	UNICOM <b>122.8 (CTAF) ①</b>
--------------------------	--	---------------------------------



ELEV 358	TDZE 356
----------	----------



CATEGORY	A	B	C	D
LPV DA		633-1	277 (300-1)	
LNAV/VNAV DA		794-1½	438 (500-1½)	
LNAV MDA	740-1	384 (400-1)	740-1½ 384 (400-1½)	740-1¼ 384 (400-1¼)
CIRCLING	800-1 442 (500-1)	820-1 462 (500-1)	960-1¾ 602 (700-1¾)	960-2 602 (700-2)

SE-2, 26 JAN 2023 to 23 FEB 2023

SE-2, 26 JAN 2023 to 23 FEB 2023