

VOR/DME BSV 112.4 Chan 71	APP CRS 115°	Rwy Idg 5189 TDZE 1113 Apt Elev 1136
---	------------------------	---

VOR RWY 10

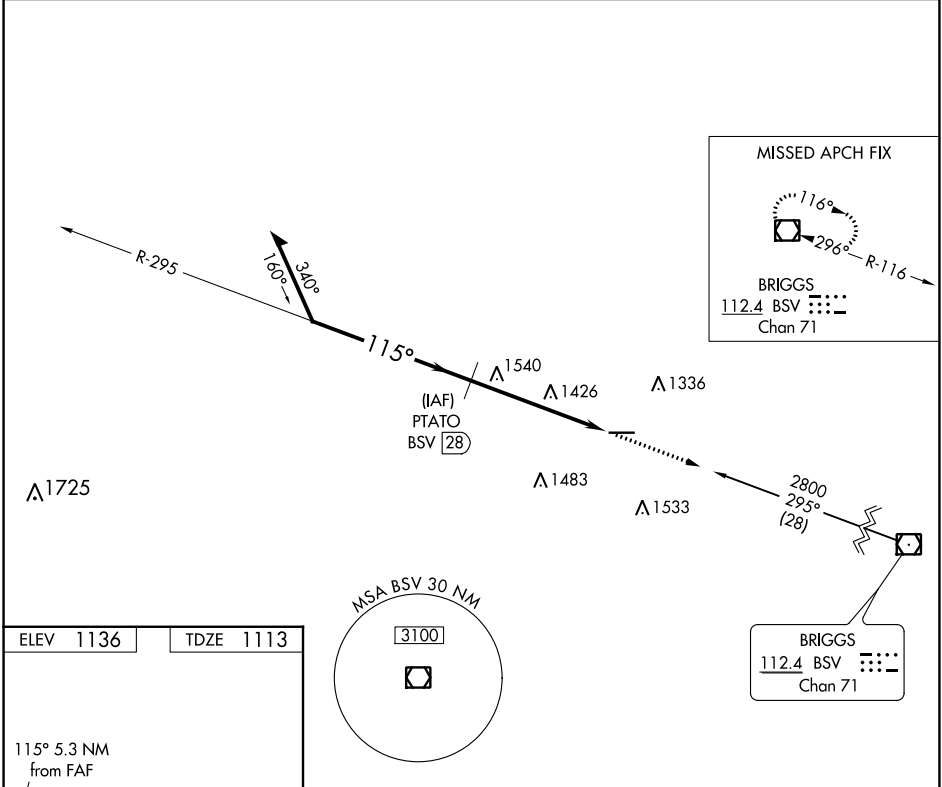
WAYNE COUNTY (BJJ)

DME required.

▼ When local altimeter setting not received, use Akron-Canton Rgnl altimeter setting and increase all MDA 60 feet; increase S-10 Cat C/D and Circling Cat C/D visibility ¼ SM. Rwy 10 helicopter visibility reduction below ¼ SM NA.

MISSED APPROACH: Climb to 2800 direct BSV VOR/DME and hold.

ASOS 118.075	CLEVELAND APP CON ★ 118.6 371.875	CLNC DEL 121.75	UNICOM 122.8 (CTAF) 0
------------------------	---	---------------------------	---------------------------------



ELEV 1136	TDZE 1113
-----------	-----------

115° 5.3 NM from FAF

5189 X 100

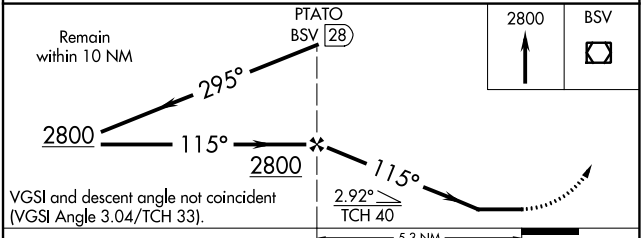
0.5% UP

REIL Rwys 10 and 28 0

HIRL Rwy 10-28 0

FAF to MAP 5.3 NM

Knots	60	90	120	150	180
Min:Sec	5:18	3:32	2:39	2:07	1:46



CATEGORY	A	B	C	D
S-10	1840-1 727 (800-1)	1840-1 ¼ 727 (800-1 ¼)	1840-2 727 (800-2)	1840-2 ¼ 727 (800-2 ¼)
C CIRCLING	1840-1 704 (800-1)	1840-1 ¼ 704 (800-1 ¼)	1840-2 704 (800-2)	1840-2 ¼ 704 (800-2 ¼)

EC-2, 26 JAN 2023 to 23 FEB 2023

EC-2, 26 JAN 2023 to 23 FEB 2023