

VOR/DME BSV 112.4 Chan 71	APP CRS 296°	Rwy Idg 4971 TDZE 1134 Apt Elev 1136
---	------------------------	---

VOR RWY 28

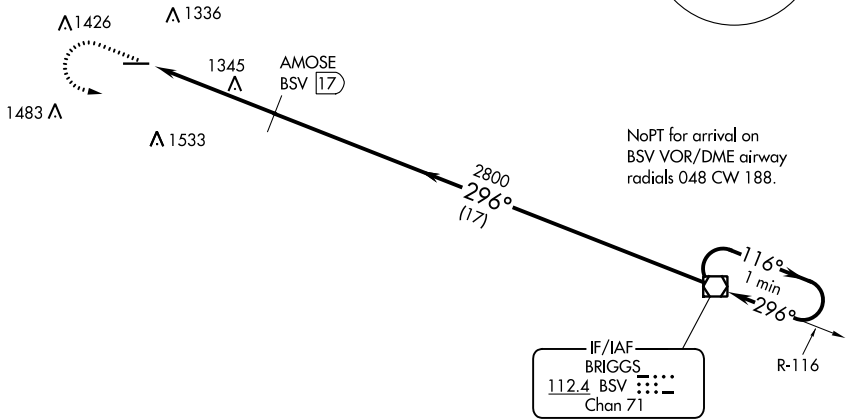
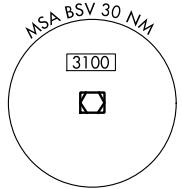
WAYNE COUNTY (BJJ)

⚠ DME required. Helicopter visibility reduction below 3/4 SM NA.
⚠ When local altimeter setting not received, use Akron-Canton Rgnl altimeter setting and increase all MDA 60 feet and visibility Circling Cat C/D 1/4 SM.

MISSED APPROACH: Climb to 2800 then left turn direct BSV VOR/DME and hold.

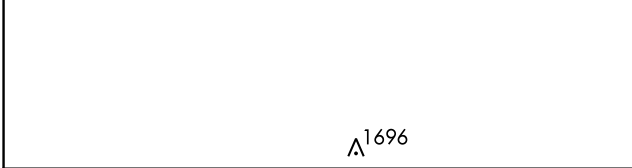
ASOS 118,075	CLEVELAND APP CON * 118.6 371.875	CLNC DEL 121.75	UNICOM 122.8 (CTAF) 0
------------------------	---	---------------------------	---------------------------------

DME REQUIRED

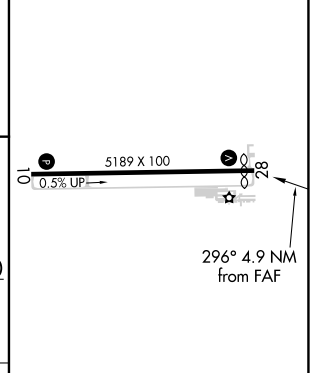
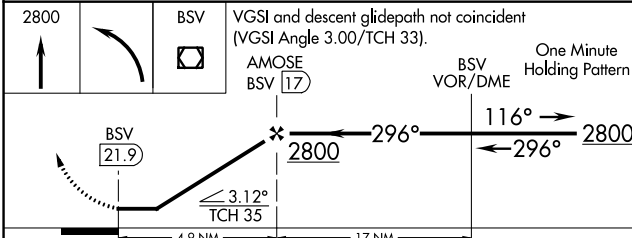


EC-2, 26 JAN 2023 to 23 FEB 2023

EC-2, 26 JAN 2023 to 23 FEB 2023



ELEV 1136	TDZE 1134
-----------	-----------



CATEGORY	A	B	C	D
S-28	1660-1 526 (600-1)	1660-1 1/4 526 (600-1 1/4)	1660-1 1/2 526 (600-1 1/2)	1660-1 3/4 526 (600-1 3/4)
CIRCLING	1660-1 524 (600-1)	1700-1 1/4 564 (600-1 1/4)	1800-1 3/4 664 (700-1 3/4)	1840-2 1/4 704 (800-2 1/4)

REIL Rwy 10 and 28 0
HIRL Rwy 10-28 0

FAF to MAP 4.9 NM

Knots	60	90	120	150	180
Min:Sec	4:54	3:16	2:27	1:58	1:38