

WAAS CH 48836 W24A	APP CRS 240°	Rwy Idg TDZE Apt Elev	6406 597 616
--	------------------------	-----------------------------	---

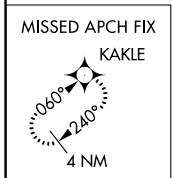
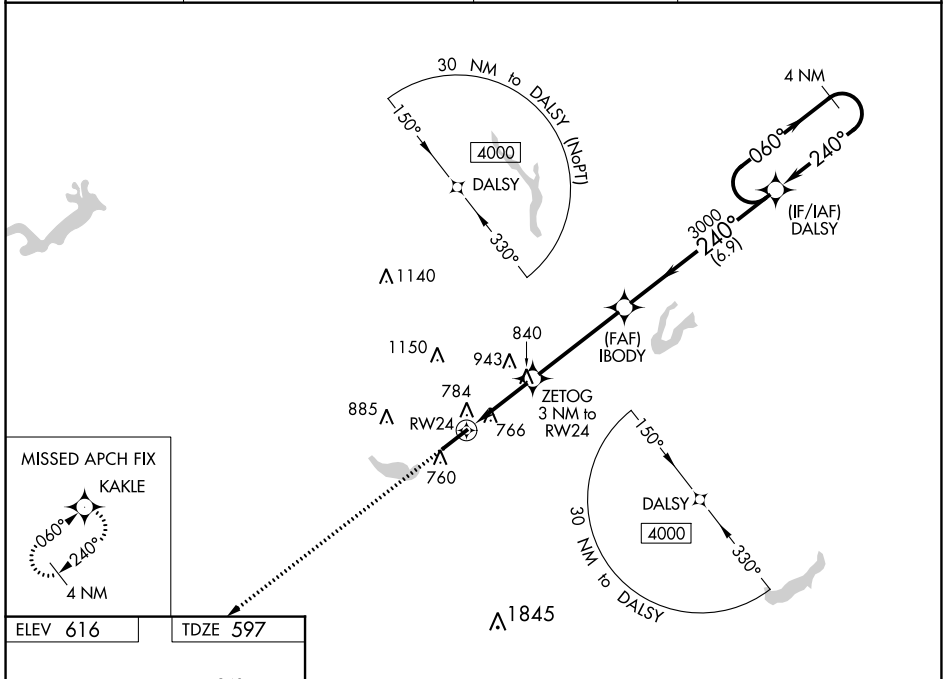
RNAV (GPS) RWY 24

BURLINGTON/ALAMANCE RGNL (BUY)

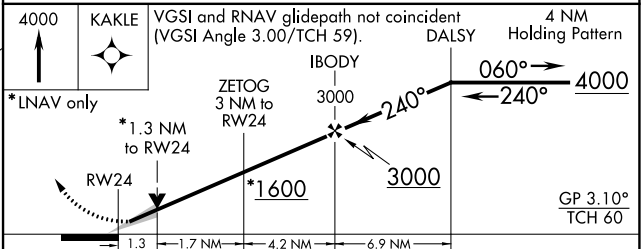
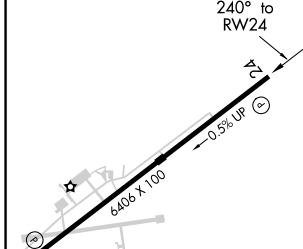
⚠ For uncompensated Baro-VNAV systems, LNAV/VNAV NA below -12°C (11°F) or above 54°C (130°F). DME/DME RNP-0.3 NA. When local altimeter setting not received, use Greensboro altimeter setting and increase all DA 97 feet and all MDA 100 feet. Increase LPV, LNAV/VNAV, LNAV Cats C/D and Circling Cat C visibility ¼ mile. Baro-VNAV and VDP NA when using Greensboro altimeter setting. Helicopter visibility reduction below ¾ SM NA.

MISSED APPROACH:
Climb to 4000 direct KAKLE and hold.

ASOS 135.325	GREENSBORO APP CON 126.6 327.075	CLNC DEL 120.25	UNICOM 122.975 (CTAF) 0
------------------------	--	---------------------------	-----------------------------------



ELEV 616	TDZE 597
----------	----------



	A	B	C	D
CATEGORY	A	B	C	D
LPV DA		987-1¼	390 (400-1¼)	
LNAV/VNAV DA		1056-1½	459 (500-1½)	
LNAV MDA	1060-1	463 (500-1)	1060-1¾	463 (500-1¾)
C CIRCLING	1100-1	484 (500-1)	1520-2¾ 904 (1000-2¾)	1520-3 904 (1000-3)

SE-2, 26 JAN 2023 to 23 FEB 2023

SE-2, 26 JAN 2023 to 23 FEB 2023