

WAAS CH 69322 W03A	APP CRS 031°	Rwy Idg TDZE 1248 Apt Elev 1270	5500
--	------------------------	---	-------------

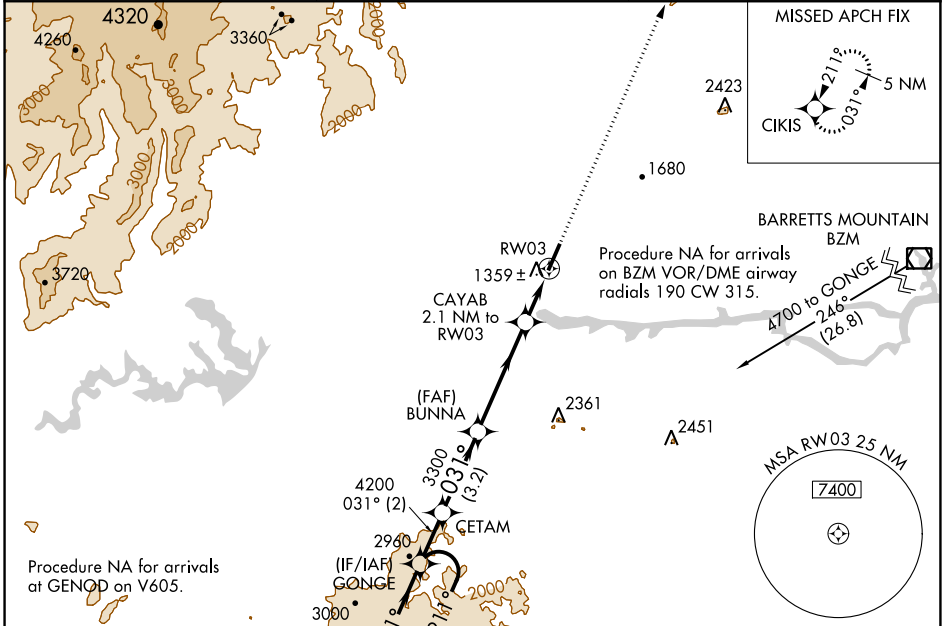
RNAV (GPS) RWY 3

FOOTHILLS RGNL (MRN)

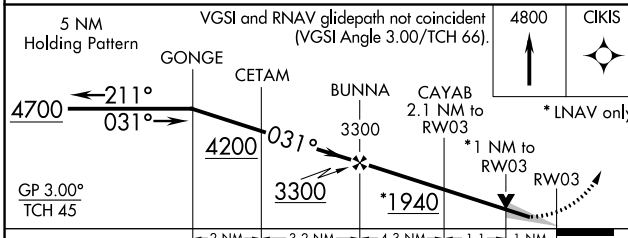
⚠ Baro-VNAV NA when using Hickory altimeter setting. For uncompensated Baro-VNAV systems, LNAV/VNAV NA below -17°C (2°F) or above 36°C (96°F). DME/DME RNP-0.3 NA. VDP NA with Hickory altimeter setting. When local altimeter not received use Hickory altimeter: increase LPV DA to 1540 feet, LNAV/VNAV DA to 1600 feet, and visibility LNAV/VNAV all Cats ½ SM; increase all MDA 60 feet and visibility LNAV Cats C and D ½ SM and Circling Cat D ¼ SM.

⚠ MISSED APPROACH: Climb to 4800 direct CIKIS and hold.

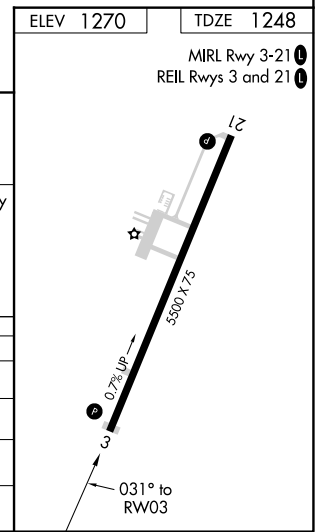
AWOS-3P 124.175	ATLANTA CENTER 125.15 263.0	UNICOM 122.7 (CTAF) 0
---------------------------	---------------------------------------	--



ELEV 1270	TDZE 1248
MIRL Rwy 3-21 1	
REIL Rwy 3 and 21 1	



CATEGORY	A	B	C	D
LPV DA		1498-1	250 (300-1)	
LNAV/VNAV DA		1558-1½	310 (300-1½)	
LNAV MDA		1620-1	372 (400-1)	
CIRCLING	1720-1 450 (500-1)	1760-1 490 (500-1)	1800-1½ 530 (600-1½)	2140-2¾ 870 (900-2¾)



SE-2, 26 JAN 2023 to 23 FEB 2023

SE-2, 26 JAN 2023 to 23 FEB 2023