

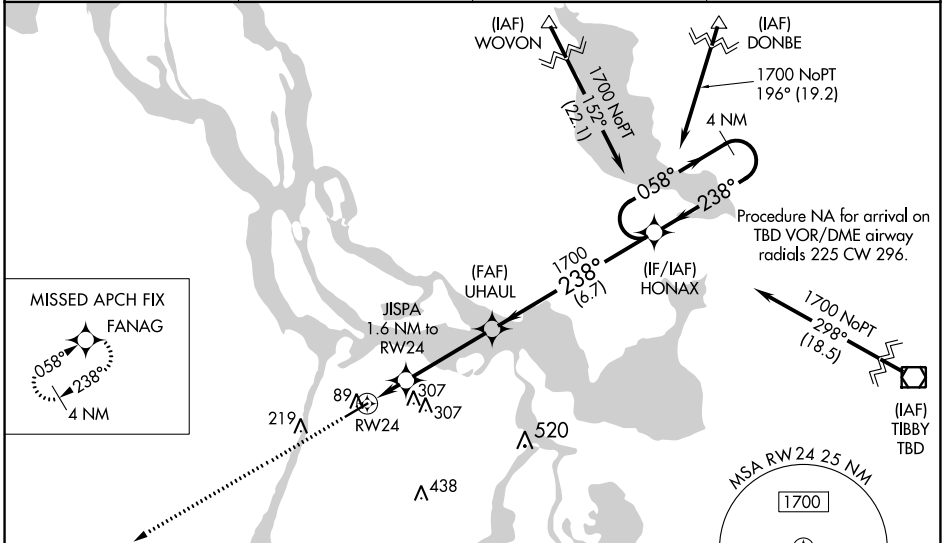
WAAS CH <b>40320</b> <b>W24A</b>	APP CRS <b>238°</b>	Rwy Idg TDZE Apt Elev	<b>5399</b> <b>9</b> <b>9</b>
--	------------------------	-----------------------------	-------------------------------------

# RNAV (GPS) RWY 24

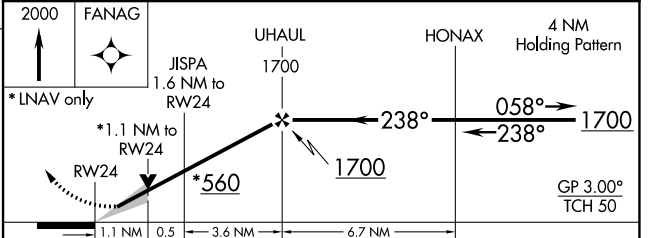
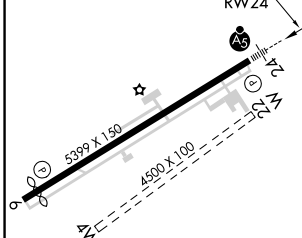
HARRY P WILLIAMS MEML (PTN)

RNP APCH.	MALSRL 	MISSED APPROACH: Climb to 2000 direct FANAG and hold.
<p>▼ For uncompensated Baro-VNAV systems, LNAV/VNAV NA below -15°C or above 54°C.                  ▲ Circling NA to Rwy 4W and 22W. Baro-VNAV and VDP NA when using New Iberia altimeter setting. When local altimeter setting not received, use New Iberia altimeter setting: increase LPV DA to 291 feet; increase LNAV/VNAV DA to 341 feet and visibility all Cats ½ SM; increase all MDAs 100 feet and LNAV Cat C visibility ¼ SM and Circling Cat C visibility ½ SM. For inop MALSRL, increase LNAV Cat C visibility to 1 mile. For inop MALSRL, when using New Iberia altimeter setting, increase LPV all Cats visibility to ¾ mile, LNAV/VNAV all Cats visibility to 1 ½ mile, and LNAV Cat C visibility to 1 ¾ mile. When VGSI inop, Circling Rwy 6 NA at night.</p>		

AWOS-3PT <b>134.575</b>	NEW ORLEANS APP CON <b>124.3 350.35</b>	CLNC DEL <b>124.3</b>	UNICOM <b>122.8 (CTAF)</b>
----------------------------	--	--------------------------	-------------------------------



ELEV <b>9</b>	TDZE <b>9</b>
---------------	---------------



CATEGORY	A	B	C	D
LPV DA		209-½	200 (200-½)	NA
LNAV/VNAV DA		259-½	250 (300-½)	NA
LNAV MDA	400-½	391 (400-½)	400-5/8 391 (400-5/8)	NA
CIRCLING	520-1 511 (600-1)	660-1 651 (700-1)	660-1 ¾ 651 (700-1 ¾)	NA

SC-4, 26 JAN 2023 to 23 FEB 2023

SC-4, 26 JAN 2023 to 23 FEB 2023