

APP CRS	Rwy Idg	<b>5005</b>
<b>058°</b>	TDZE	<b>9</b>
	Apt Elev	<b>9</b>

# RNAV (GPS) RWY 6

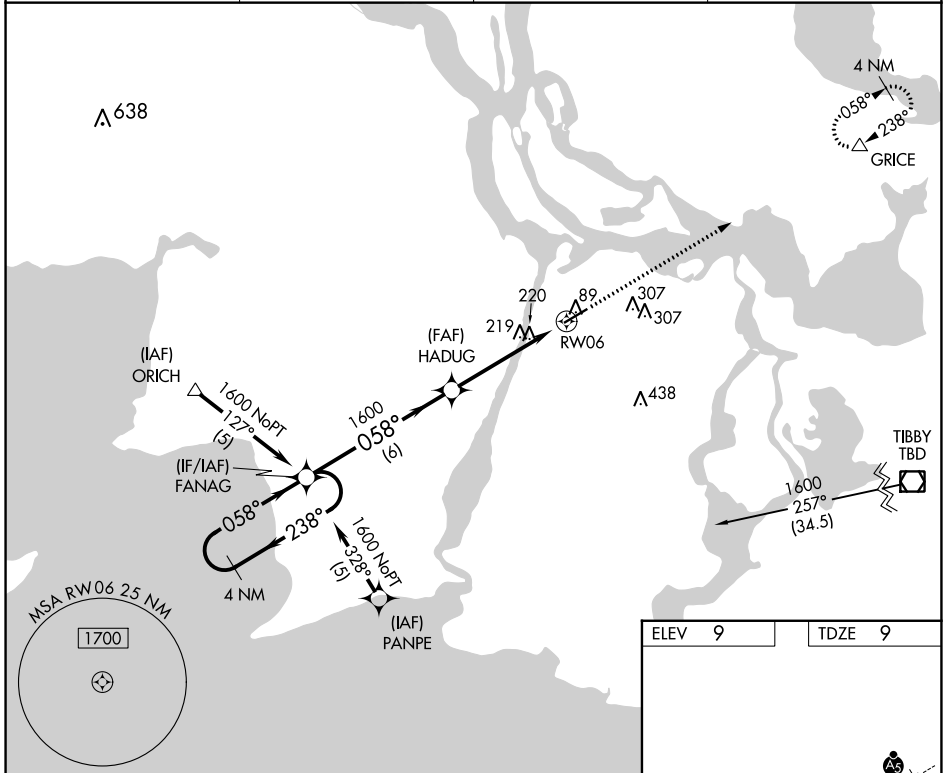
HARRY P WILLIAMS MEML (PTN)

RNP APCH.

**▽** Circling NA to Rwy 4W and 22W. Rwy 6 helicopter visibility reduction below 1 SM NA.  
**▲** When local altimeter setting not received, use New Iberia altimeter setting and increase all MDA 100 feet; increase LNAV Cat C visibility ¼ SM and Circling Cat C visibility ½ SM. When VGSI inop, Straight-in/Circling Rwy 6 procedure NA at night.

MISSED APPROACH: Climb to 1700 direct GRICE and hold.

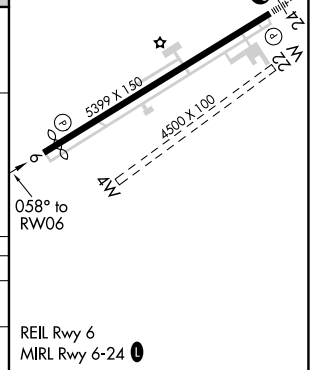
AWOS-3PT <b>134.575</b>	NEW ORLEANS APP CON <b>124.3 350.35</b>	CLNC DEL <b>124.3</b>	UNICOM <b>122.8 (CTAF) 0</b>
----------------------------	--	--------------------------	---------------------------------



4 NM Holding Pattern

VGSI and descent angles not coincident (VGSI Angle 3.00/TCH 50).

ELEV 9	TDZE 9			
1600 ← 238°	058° →			
← 058°	→ 1600			
FANAG (6 NM) → HADUG (4.8 NM) → RWY 6 (3.03° TCH 45)				
CATEGORY	A	B	C	D
LNAV MDA	540-1	531 (600-1)	540-1½ 531 (600-1½)	NA
CIRCLING	540-1 531 (600-1)	660-1 651 (700-1)	660-1¾ 651 (700-1¾)	NA



SC-4, 26 JAN 2023 to 23 FEB 2023

SC-4, 26 JAN 2023 to 23 FEB 2023