

WAAS CH <b>86229</b> <b>W18A</b>	APP CRS <b>179°</b>	Rwy Idg TDZE Apt Elev	<b>5849</b> <b>71</b> <b>75</b>
--	------------------------	-----------------------------	---------------------------------------

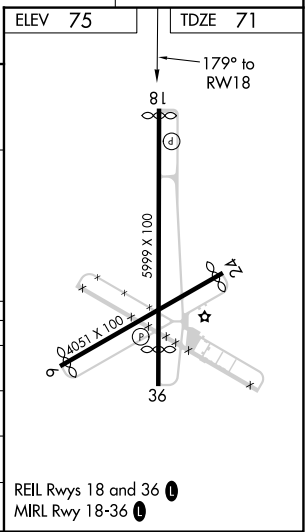
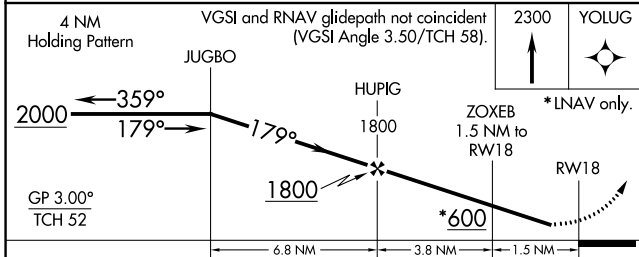
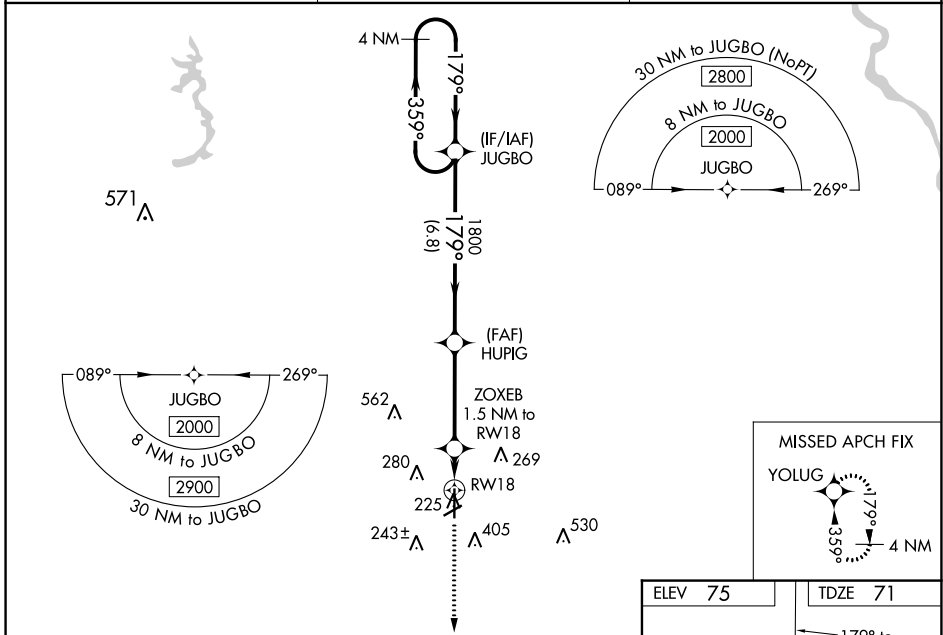
# RNAV (GPS) RWY 18

ST LANDRY PARISH-AHART FLD (OPL)

**⚠** Baro-VNAV NA when using Lafayette altimeter setting. For uncompensated Baro-VNAV systems, LNAV/VNAV NA below -15°C (5°F) or above 43°C (109°F). When VGSI inop, Straight-in/Circling Rwy 18 procedure NA at night. DME/DME RNP-0.3 NA. Helicopter visibility reduction below 1 SM NA. Circling to Rwy 6/24 NA at night. When local altimeter setting not received, use Lafayette altimeter setting: Increase LPV DA to 377 feet, LNAV/VNAV DA to 442 feet, and visibility LNAV/VNAV all Cats ¼ SM; increase all MDA 60 feet and visibility LNAV Cat C and D and Circling Cat C and D ¼ SM.

**MISSED APPROACH:** Climb to 2300 direct YOLUG and hold.

AWOS-3PT <b>118.775</b>	LAFAYETTE APP CON ★ <b>128.7 268.7</b>	UNICOM <b>123.0 (CTAF) 0</b>
----------------------------	---	---------------------------------



CATEGORY	A	B	C	D
LPV DA		321-1	250 (300-1)	
LNAV/VNAV DA		386-1	315 (400-1)	
LNAV MDA	480-1 409 (500-1)		480-1½ 409 (500-1½)	
CIRCLING	780-1 705 (800-1)		780-2 705 (800-2)	920-2¾ 845 (900-2¾)

SC-4, 26 JAN 2023 to 23 FEB 2023

SC-4, 26 JAN 2023 to 23 FEB 2023