

| | | |
|--|------------------------|---|
| WAAS CH 73027 W36A | APP CRS 359° | Rwy Idg 5210 TDZE 74 Apt Elev 75 |
|--|------------------------|---|

RNAV (GPS) RWY 36

ST LANDRY PARISH-AHART FLD (OPL)

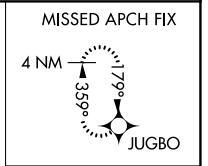
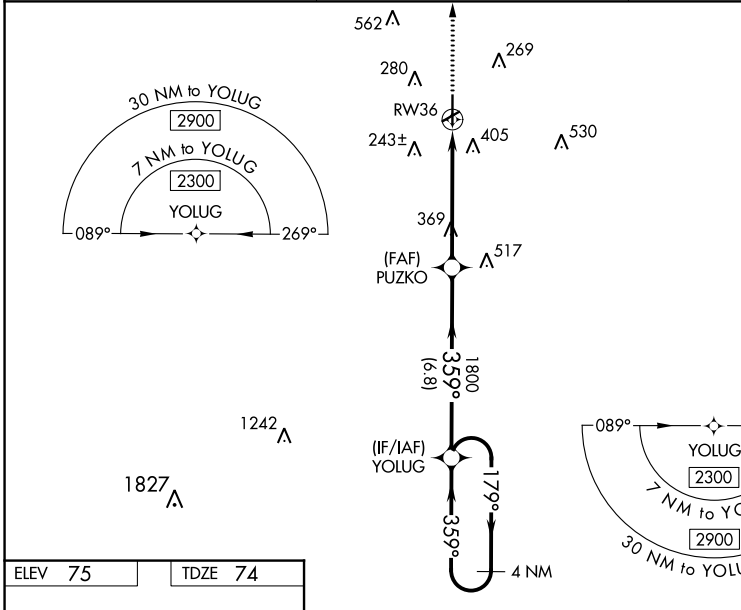
Baro-VNAV NA when using Lafayette altimeter setting. For uncompensated Baro-VNAV systems, LNAV/VNAV NA below -15°C (5°F) or above 43°C (109°F). When VGSI inop, Straight-in/Circling Rwy 36 procedure NA at night. DME/DME RNP-0,3 NA. Visibility reduction by helicopters NA. Circling to Rwy 6/24 NA at night. When local altimeter setting not received, use Lafayette altimeter setting: Increase LPV DA to 407 feet, LNAV/VNAV DA to 749 feet, and visibility LPV all Cats ½ SM and LNAV/VNAV all Cats ¼ SM; increase all MDA 60 feet and visibility LNAV Cats C and D ¼ SM and Circling Cat C and D ¼ SM.

MISSED APPROACH: Climb to 2000 direct JUGBO and hold.

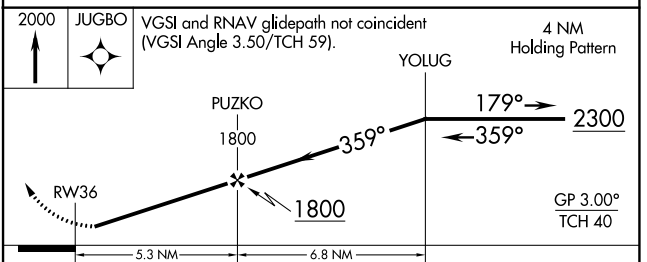
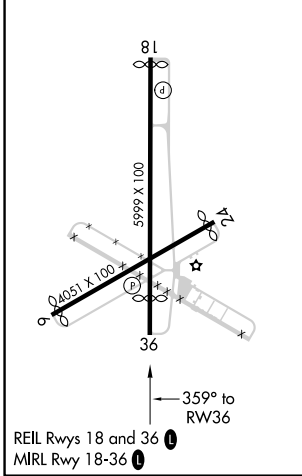
AWOS-3PT
118.775

LAFAYETTE APP CON★
128.7 268.7

UNICOM
123.0 (CTAF) 0



| | |
|----------------|----------------|
| ELEV 75 | TDZE 74 |
|----------------|----------------|



| CATEGORY | A | B | C | D |
|--------------|---------------------|-------------|----------------------|------------------------|
| LPV DA | 351-1 277 (300-1) | | | |
| LNAV/VNAV DA | 693-2¼ 619 (700-2¼) | | | |
| LNAV MDA | 620-1 | 546 (600-1) | 620-1½ | 546 (600-1½) |
| CIRCLING | 780-1 | 705 (800-1) | 780-2 705 (800-2) | 920-2¾ 845 (900-2¾) |

SC-4, 26 JAN 2023 to 23 FEB 2023

SC-4, 26 JAN 2023 to 23 FEB 2023