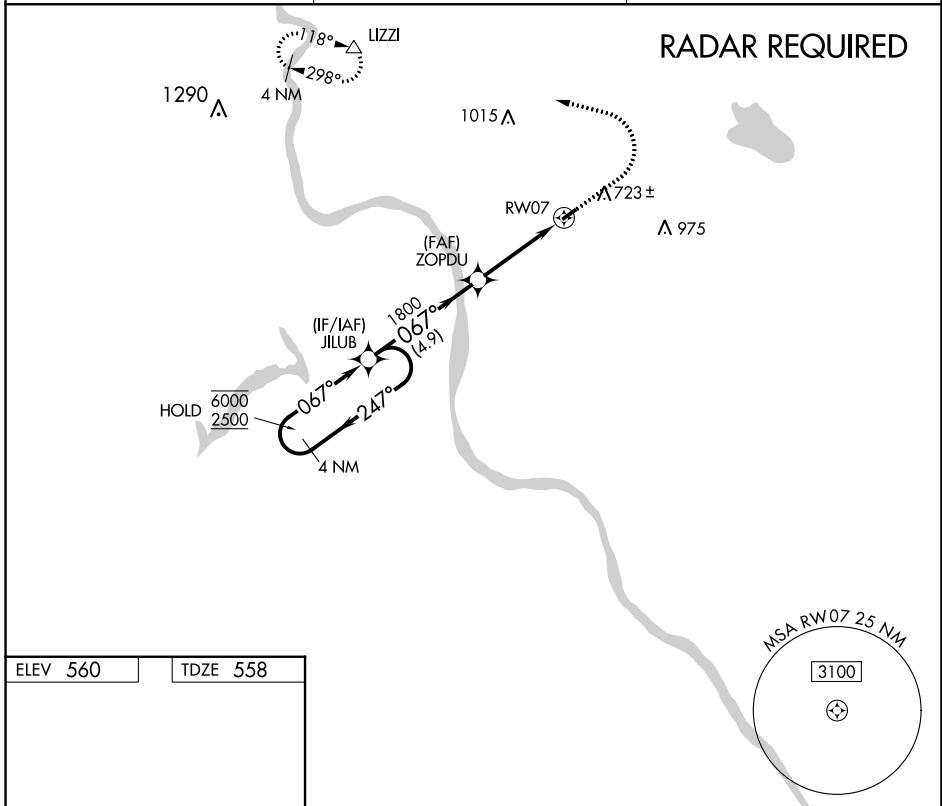


APP CRS <b>067°</b>	Rwy Idg <b>2900</b>
	TDZE <b>558</b>
	Apt Elev <b>560</b>

# RNAV (GPS) RWY 7

SKY MANOR (N40)

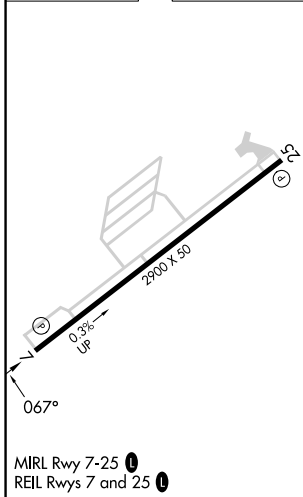
RNP APCH ▼ ▲	Procedure NA at night. When local altimeter setting not received, use Lehigh Valley Intl altimeter setting. Rwy 7 helicopter visibility reduction below 1 SM NA.	MISSED APPROACH: Climb to 1100 then climbing left turn to 3000 direct IZZI and hold.
AWOS-3 <b>121.725</b>	ALLENTOWN APP CON <b>119.65 124.45 351.8</b>	UNICOM <b>122.975 (CTAF) 0</b>



NE-2, 26 JAN 2023 to 23 FEB 2023

NE-2, 26 JAN 2023 to 23 FEB 2023

ELEV 560	TDZE 558
----------	----------



4 NM Holding Pattern		Visual Segment - Obstacles.		
		1100	3000	IZZI
		↑	↶	△
6000 ← 247°		ZOPDU		
2500 → 067°		RWY 07		
		1800		
		4.9 NM	3.8 NM	
CATEGORY	A	B	C	D
LNAV MDA	1080-1 522 (600-1)	NA		
CIRCLING	1140-1 580 (600-1)	NA		