

LOC/DME I-RGL 108.5 Chan 22	APP CRS 093°	Rwy Idg TDZE Apt Elev N/A N/A 44
---	------------------------	--

LDA-C

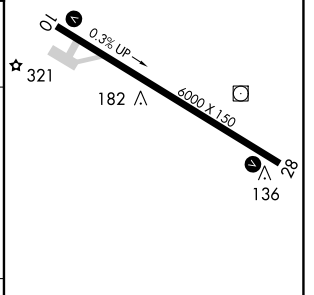
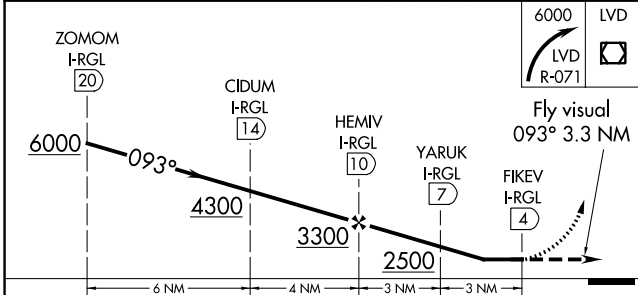
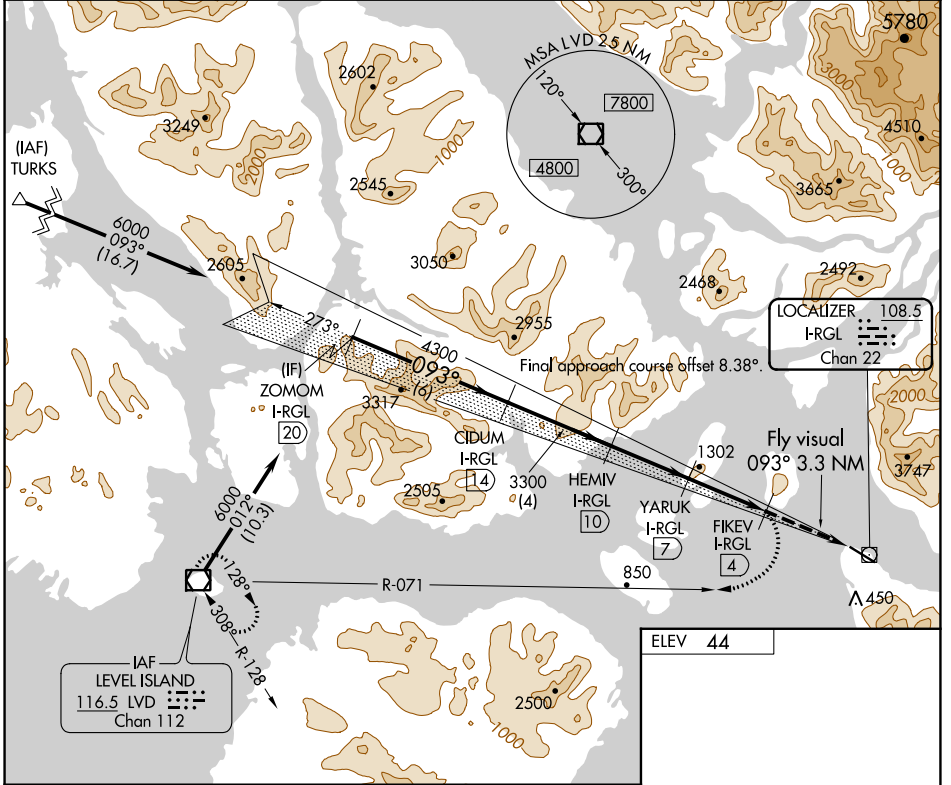
WRANGELL (WRG) (PAWG)

⚠ Circling NA south of Rwy 10-28. DME required. Any go-around commenced after passing the MAP will not provide standard obstacle clearance.

⚠ -5°C

MISSED APPROACH: Immediate climbing right turn to 6000 on LVD VOR/DME R-071 to LVD VOR/DME and hold.

AWOS-3P 128.5	ANCHORAGE CENTER 118.0	SITKA RADIO 122.45	CTAF 122.6
-------------------------	----------------------------------	------------------------------	----------------------



CATEGORY	A	B	C	D
C CIRCLING	1560-3	1516 (1600-3)	2460-3 2416 (2500-3)	NA

REIL Rwy 10 and 28
HIRL Rwy 10-28

AK, 29 DEC 2022 TO 23 FEB 2023

AK, 29 DEC 2022 TO 23 FEB 2023