

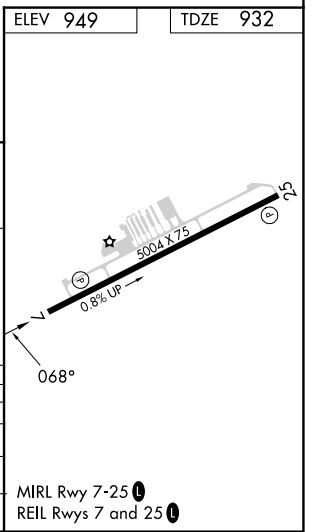
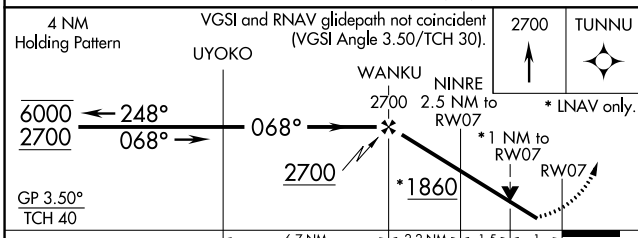
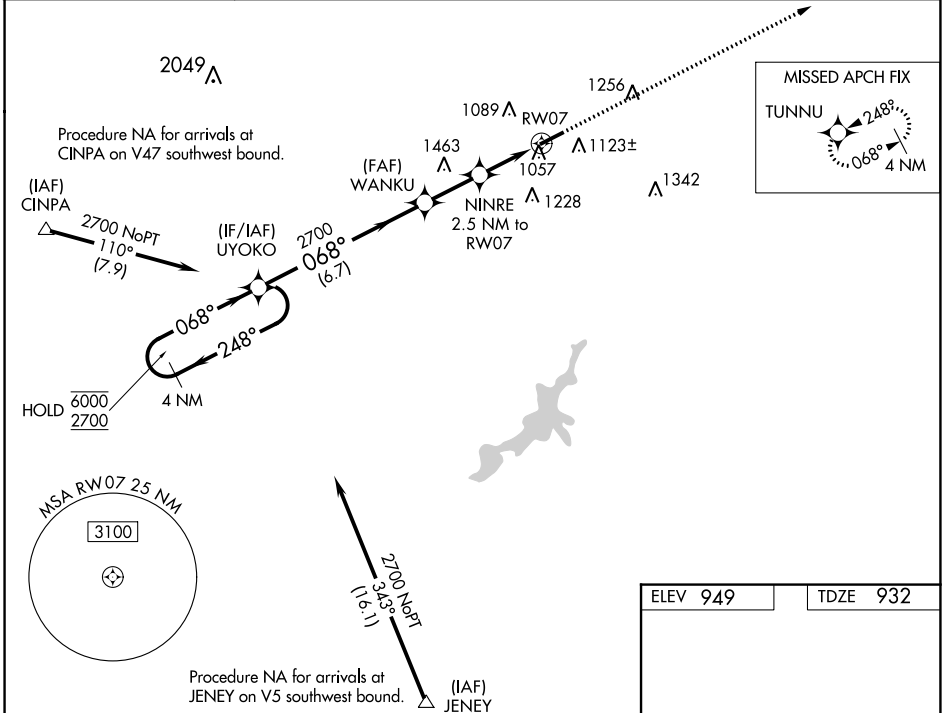
WAAS CH 97702 W07A	APP CRS 068°	Rwy Idg 5004 TDZE 932 Apt Elev 949
--	------------------------	---

RNAV (GPS) RWY 7

GREENE COUNTY/LEWIS A JACKSON RGNL (I19)

RNP APCH.	<p>When local altimeter setting not received, use Dayton/Wright Brothers altimeter setting: increase LPV DA to 1235 feet; increase LNAV/VNAV DA to 1268 feet; increase all MDA 40 feet and LNAV visibility Cat C 1/8 SM. Rwy 7 helicopter visibility reduction below 3/4 NM NA. VDP and Baro-VNAV NA when using Dayton/Wright Brothers altimeter setting. For uncompensated Baro-VNAV systems, LNAV/VNAV NA below -16°C or above 54°C.</p>	MISSED APPROACH: Climb to 2700 direct TUNNU and hold.
-----------	--	--

AWOS-3 118.525	COLUMBUS APP CON 118.85 269.275	UNICOM 122.7 (CTAF) 0
--------------------------	---	---------------------------------



CATEGORY	A	B	C	D
LPV DA	1205-1	273 (300-1)		NA
LNAV/VNAV DA	1238-1	306 (300-1)		NA
LNAV MDA	1320-1	388 (400-1)	1320-1/8 388 (400-1/8)	NA
CIRCLING	1480-1	531 (600-1)	1560-1 3/4 611 (700-1 3/4)	NA

EC-2, 26 JAN 2023 to 23 FEB 2023

EC-2, 26 JAN 2023 to 23 FEB 2023