

WAAS CH <b>72924</b> <b>W02A</b>	APP CRS <b>017°</b>	Rwy Idg <b>5000</b> TDZE <b>361</b> Apt Elev <b>365</b>
----------------------------------------	------------------------	---------------------------------------------------------------

# RNAV (GPS) RWY 2

FITZGERALD MUNI (FZG)

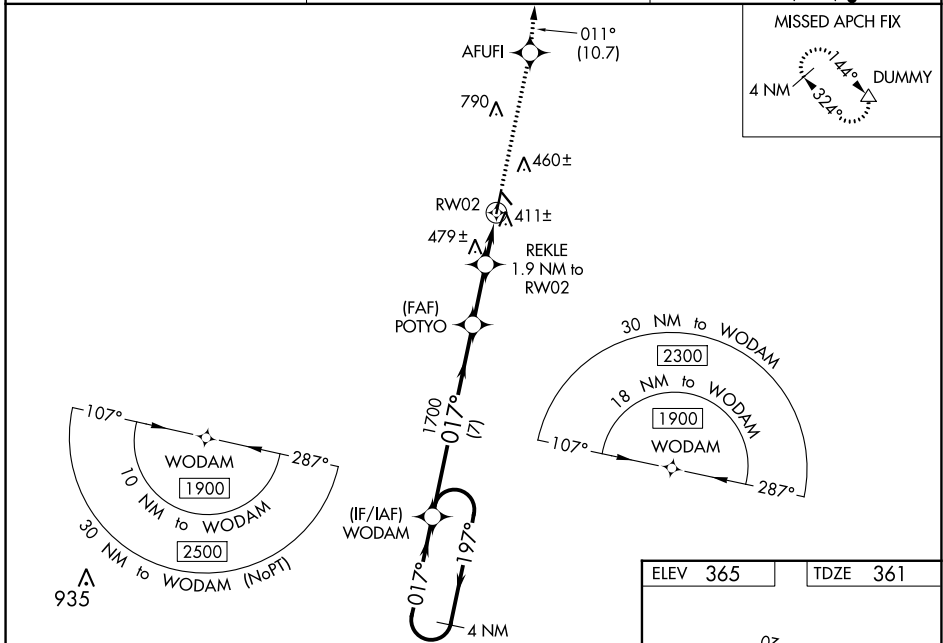
RNP APCH - GPS.

**▼** Circling NA to Rwy 15 and 33. Baro-VNAV and VDP NA when using Tifton altimeter setting.  
**▲** For uncompensated Baro-VNAV systems, LNAV/VNAV NA below -15°C or above 54°C.  
 When local altimeter setting not received, use Tifton altimeter setting: increase LPV DA to 656 feet and LNAV/VNAV DA to 691 feet; increase LNAV/VNAV all Cats visibility 1/8 SM, increase all MDAs 60 feet and LNAV visibility Cats C/D 1/8 SM, and Circling Cats C/D visibility 1/4 SM. Inop table does not apply to LPV all Cats and LNAV Cats C/D. For inop ALS increase LNAV/VNAV Cats A/B visibility to 7/8 SM. For inop ALS when using Tifton altimeter setting increase LPV Cats A/B visibility to 7/8 SM and LNAV/VNAV Cats A/B visibility to 1 SM.



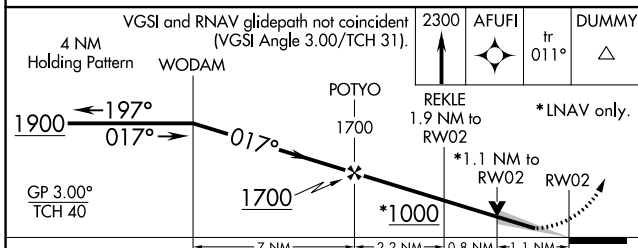
**MISSED APPROACH:**  
 Climb to 2300 direct AFUFI and on track 011° to DUMMY and hold.

AWOS-3 <b>118.625</b>	JACKSONVILLE CENTER <b>127.575 269.025</b>	UNICOM <b>123.0 (CTAF)</b>
--------------------------	-----------------------------------------------	-------------------------------

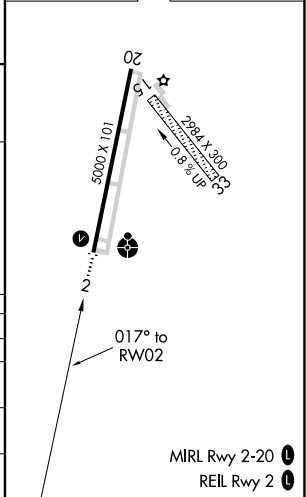


SE-4, 26 JAN 2023 to 23 FEB 2023

SE-4, 26 JAN 2023 to 23 FEB 2023



ELEV 365	TDZE 361
----------	----------



CATEGORY	A	B	C	D
LPV DA	611-3/4 250 (300-3/4)			
LNAV/VNAV DA	646-3/4 285 (300-3/4)			
LNAV MDA	740-3/4 379 (400-3/4)		740-1 379 (400-1)	
<b>C</b> CIRCLING	880-1 515 (600-1)		1160-2 1/4 795 (800-2 1/4)   1160-2 1/2 795 (800-2 1/2)	

MIRL Rwy 2-20  
 REIL Rwy 2