

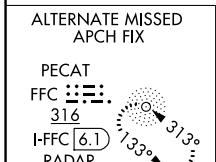
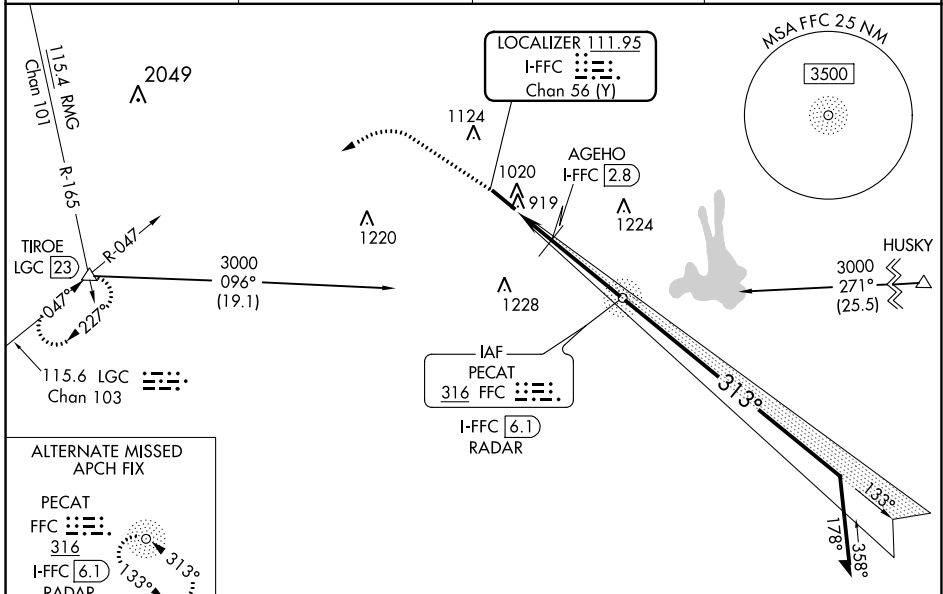
LOC/DME I-FFC <b>111.95</b> Chan 56 (Y)	APP CRS <b>313°</b>	Rwy Idg TDZE Apt Elev	<b>5118</b> <b>807</b> <b>808</b>
---	------------------------	-----------------------------	---

# ILS or LOC RWY 31

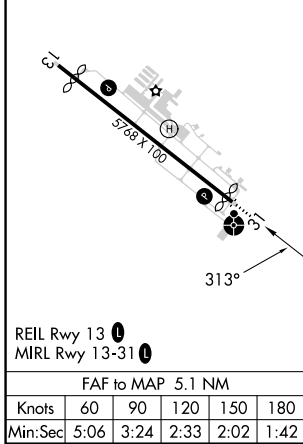
ATLANTA RGNL FALCON FLD (F'F'C)

DME or ADF or RADAR required.		ODALS 	MISSED APPROACH: Climb to 1700 then climbing left turn to 4000 on heading 275° and LGC VORTAC R-047 to TIROE INT/LGC 23 DME and hold.
	Circling Rwy 13 NA at night. Rwy 31 helicopter visibility reduction below 3/4 SM NA. Inop table does not apply to S-ILS 31 and to S-LOC 31 Cats C/D.		

ASOS <b>118.525</b>	ATLANTA APP CON <b>119.8 354.125</b>	CLNC DEL <b>119.8</b>	UNICOM <b>123.05 (CTAF)</b>
------------------------	---	--------------------------	--------------------------------



ELEV 808	<b>D</b>	TDZE 807	1700	4000	LGC R-047	TIROE	FFC NDB PECAT I-FFC 6.1 RADAR	VGSI and ILS glidepath not coincident (VGSI Angle 3.00/TCH 45). Remain within 10 NM
----------	----------	----------	------	------	-----------	-------	--	--



	AGEHO I-FFC 2.8	2467	133°	2500	313°	2500	GS 3.00° TCH 38
	I-FFC 1	1320	133°	2500	313°	2500	
	1 NM	0.8	3.3 NM				
CATEGORY	A	B	C	D			
S-ILS 31	1059-3/4		252 (300-3/4)				
S-LOC 31	1320-3/4	513 (600-3/4)	1320-1 3/8	513 (600-1 3/8)			
<b>C</b> CIRCLING	1320-1	512 (600-1)	1440-1 3/4	632 (700-1 3/4)	1540-2 1/4	732 (800-2 1/4)	
AGEHO FIX MINIMUMS (DME REQUIRED)							
S-LOC 31	1180-3/4	373 (400-3/4)	1180-1	373 (400-1)			
<b>C</b> CIRCLING	1320-1	512 (600-1)	1440-1 3/4	632 (700-1 3/4)	1540-2 1/4	732 (800-2 1/4)	

SE-4, 26 JAN 2023 to 23 FEB 2023

SE-4, 26 JAN 2023 to 23 FEB 2023