

WAAS CH 48900 W01A	APP CRS 005°	Rwy Idg 3001 TDZE 228 Apt Elev 228
--	------------------------	---

RNAV (GPS) RWY 1

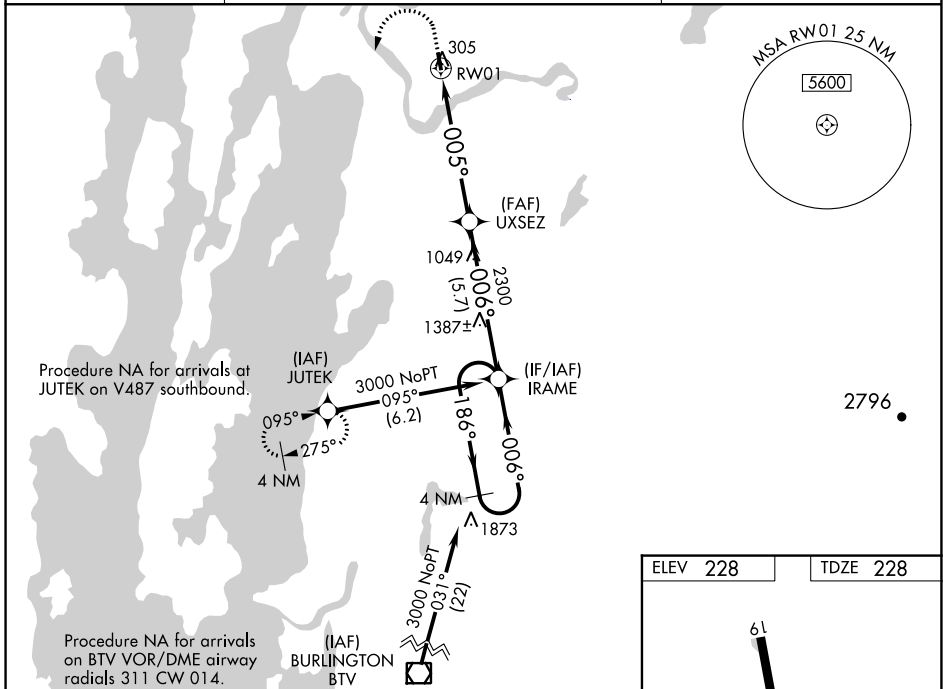
FRANKLIN COUNTY STATE (F'SO)

RNP APCH-GPS.

▼ For uncompensated Baro-VNAV systems, LNAV/VNAV NA below -1.5°C or above 54°C.
▲ Rwy 1 helicopter visibility reduction below 1 SM NA.
Procedure NA at night.

MISSED APPROACH: Climb to 1100 then climbing left turn to 3000 direct JUTEK and hold.

AWOS-3 119.025	BURLINGTON APP CON★ (EAST) 278.8 (WEST) 360.8	UNICOM 122.8 (CTAF) 0
--------------------------	---	--



NE-1, 26 JAN 2023 to 23 FEB 2023

NE-1, 26 JAN 2023 to 23 FEB 2023

4 NM Holding Pattern		IRAME		1100	3000	JUTEK
3000 ← 186°		006° →		UXSEZ 2300	VGSI and RNAV glidepath angle not coincident (VGSI Angle 4.00/TCH 35).	
GP 3.40° TCH 59		2300		RWY 1		
		5.7 NM		5.6 NM		
CATEGORY	A	B	C	D		
LPV DA	512-1	284 (300-1)		NA		
LNAV/VNAV DA	1024-2½	796 (800-2½)		NA		
LNAV MDA	920-1	692 (700-1)		NA		
CIRCLING	920-1	960-1				
	692 (700-1)	732 (800-1)		NA		

