

APP CRS	Rwy Idg <b>4402</b>
<b>282°</b>	TDZE <b>311</b>
	Apt Elev <b>319</b>

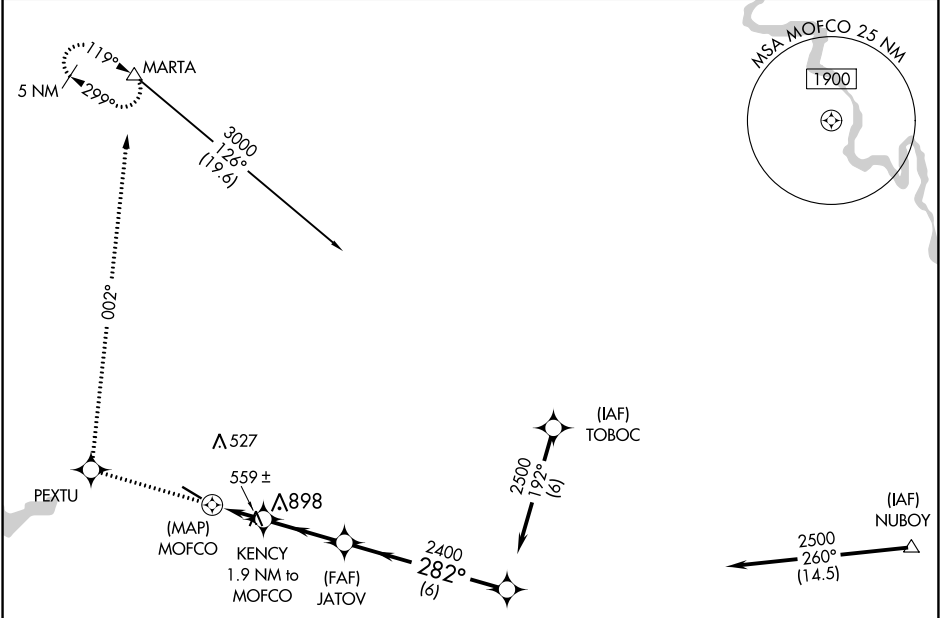
# RNAV (GPS) RWY 30

HART (3R4)

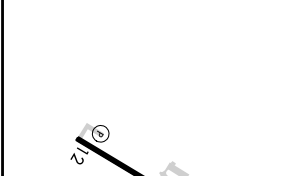
RNP APCH.  
 ▼ Rwy 30 helicopter visibility reduction below 3/4 SM NA.  
 ▲ NA Use Fort Polk altimeter setting; when not received, use Natchitoches altimeter setting and increase all MDA 20 feet.

MISSED APPROACH: Climb to 4500 direct PEXTU and right turn via track 002° to MARTA and hold, continue climb in hold to 4500.

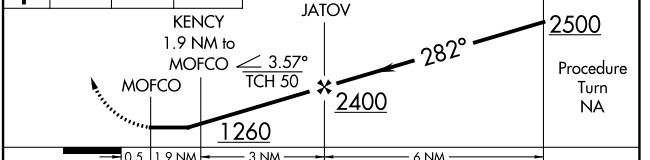
POLK APP CON <b>123.7 261.3</b>	GCO <b>135.075</b>	UNICOM <b>122.8 (CTAF)</b>
------------------------------------	-----------------------	-------------------------------



ELEV <b>319</b>	TDZE <b>311</b>
-----------------	-----------------



4500	PEXTU	MARTA	VGSI and descent angles not coincident (VGSI Angle 3.50/TCH 56).
↑			
		tr 002°	



REIL Rwys 12 and 30	MIRL Rwy 12-30			
CATEGORY	A	B	C	D
LNAV MDA	900-1	589 (600-1)	900-1 3/4 589 (600-1 3/4)	NA

SC-4, 26 JAN 2023 to 23 FEB 2023

SC-4, 26 JAN 2023 to 23 FEB 2023