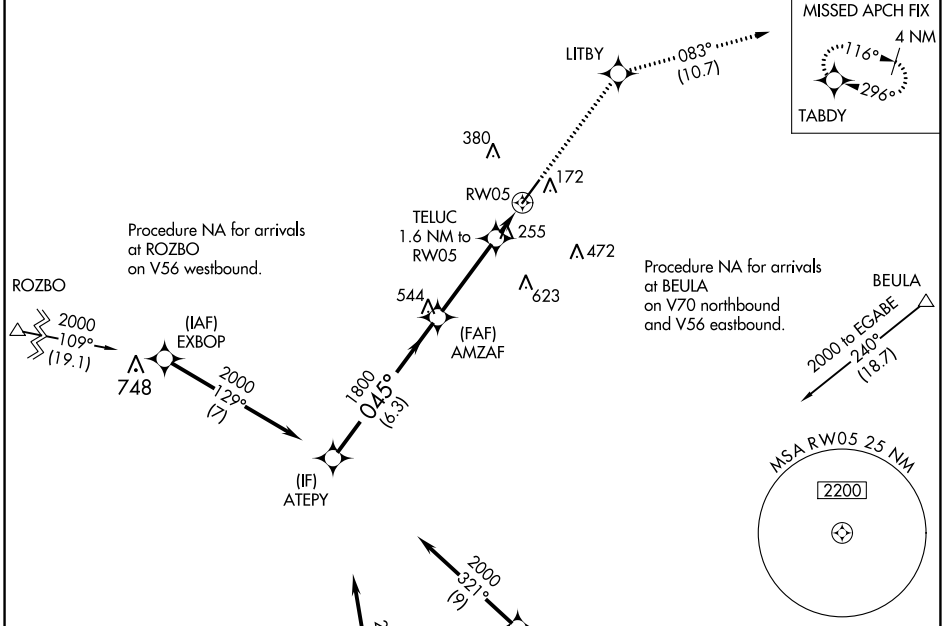


WAAS CH 63121 W05A	APP CRS 045°	Rwy Idg TDZE Apt Elev	6003 135 137
--	------------------------	-----------------------------	---

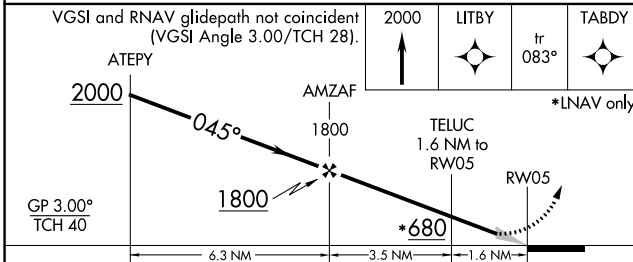
RNAV (GPS) RWY 5

DUPLIN COUNTY (DPL)

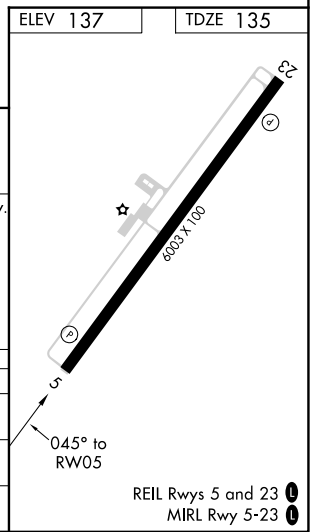
RNP APCH.		MISSED APPROACH: Climb to 2000 direct LITBY and on track 083° to TABDY and hold.	
AWOS-3 120.675	SEYMOUR JOHNSON APP CON★ 119.7 273.6	UNICOM 123.0 (CTAF) 0	



ELEV 137	TDZE 135
----------	----------



	6.3 NM		3.5 NM		1.6 NM	
CATEGORY	A	B	C	D		
LPV DA	385-3/4		250 (300-3/4)			
LNAV/VNAV DA	396-7/8		261 (300-7/8)			
LNAV MDA	520-1	385 (400-1)	520-1 1/8	385 (400-1 1/8)		



SE-2, 26 JAN 2023 to 23 FEB 2023

SE-2, 26 JAN 2023 to 23 FEB 2023