

VOR OZB <b>109.0</b>	APP CRS <b>123°</b>	Rwy ldg <b>5000</b>
		TDZE <b>2503</b>
		Apt Elev <b>2503</b>

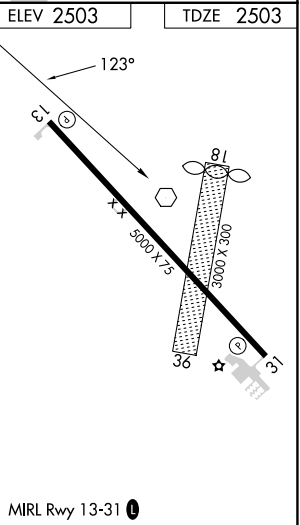
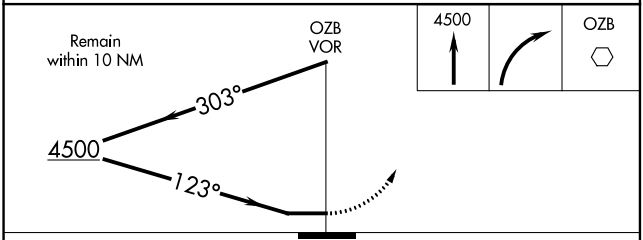
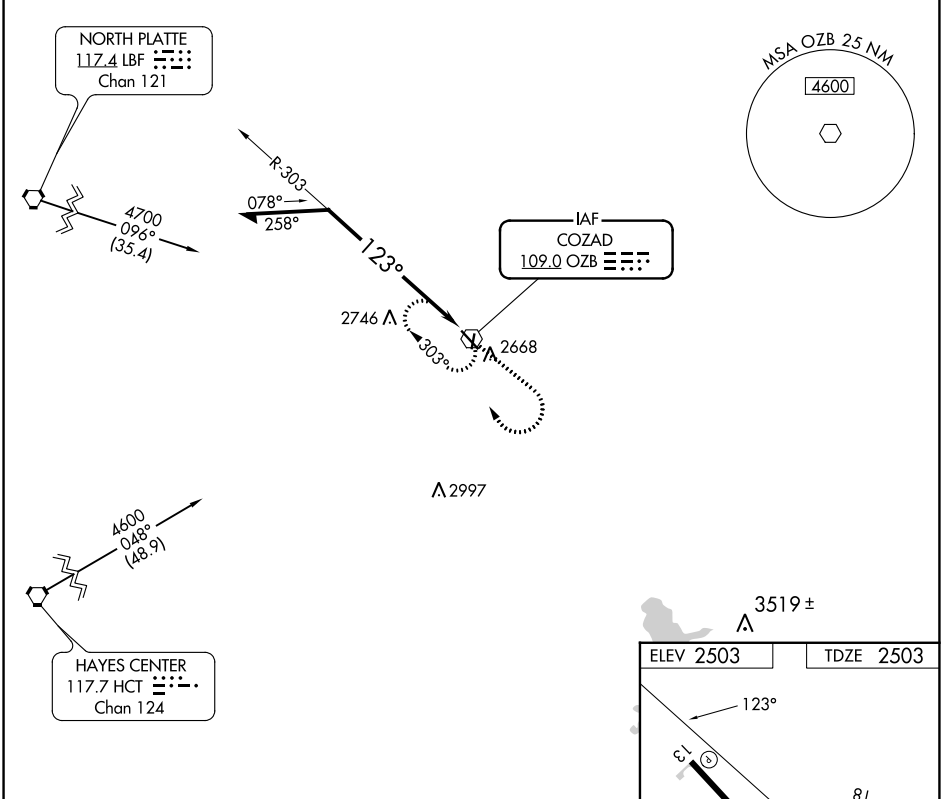
# VOR RWY 13

COZAD MUNI (CZD)

**V** Use Lexington altimeter setting; when not received, use North Platte altimeter setting and increase all MDAs 80 feet, increase Circling Cat C visibility ¼ SM. Circling NA to Rwys 18 and 36. Rwy 13 helicopter visibility reduction below ¾ SM NA.

**MISSED APPROACH:** Climb to 4500 then right turn direct OZB VOR and hold.

LXN AWOS-3 <b>121.025</b>	DENVER CENTER <b>132.7 226.675</b>	UNICOM <b>122.8 (CTAF)</b>
------------------------------	---------------------------------------	-------------------------------



CATEGORY	A	B	C	D
S-13	3140-1	637 (700-1)	3140-1¾ 637 (700-1¾)	NA
<b>C</b> CIRCLING	3140-1	637 (700-1)	3140-1¾ 637 (700-1¾)	NA