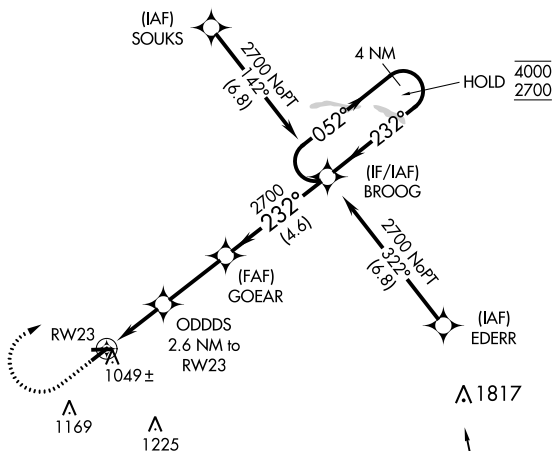
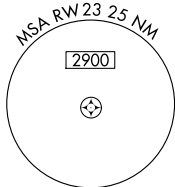


APP CRS	Rwy Idg	<b>3760</b>
<b>232°</b>	TDZE	<b>932</b>
	Apt Elev	<b>936</b>

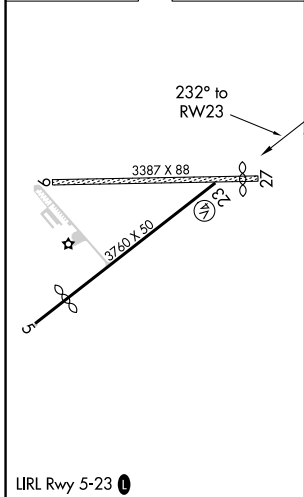
# RNAV (GPS) RWY 23

SHERIDAN (5I4)

RNP APCH - GPS.		MISSED APPROACH: Climb to 1800 then climbing right turn to 2700 direct BROOG and hold.
<b>▲ NA</b>	Circling NA to Rwy 9 and 27. Procedure NA at night. Rwy 23 helicopter visibility reduction below 1 SM NA. Use Indianapolis Exec altimeter setting.	
TYQ AWOS-3PT <b>120.725</b>	INDIANAPOLIS APP CON <b>124.65 317.8</b>	UNICOM <b>123.075 (CTAF) ①</b>



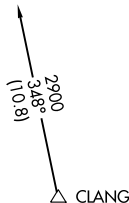
ELEV 936	TDZE 932
----------	----------



SHERIDAN, INDIANA  
Amdt 1 19MAY22

40°11'N-86°13'W

Procedure NA for arrivals at CLANG on V14-192-210 southwest bound.



1800	2700	BROOG	4 NM Holding Pattern	
↑	↷	✧		
ODDDS 2.6 NM to RWY 23		GOEAR	BROOG	
1800	2700	4000	2700	
↙ 232°	→ 052°	← 232°		
2.6 NM	2.8 NM	4.6 NM		
CATEGORY	A	B	C	D
LNAV MDA	1340-1	408 (500-1)	1340-1½ 408 (500-1½)	NA
<b>☑</b> CIRCLING	1400-1 464 (500-1)	1420-1 484 (500-1)	1500-1½ 564 (600-1½)	NA

# RNAV (GPS) RWY 23

EC-2, 26 JAN 2023 to 23 FEB 2023

EC-2, 26 JAN 2023 to 23 FEB 2023