

WAAS CH <b>99629</b> <b>W11A</b>	APP CRS <b>112°</b>	Rwy Idg <b>3198</b> TDZE <b>604</b> Apt Elev <b>604</b>
--	------------------------	---

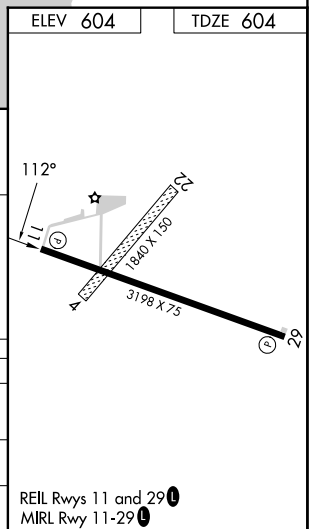
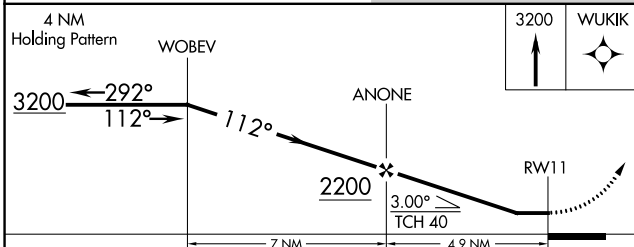
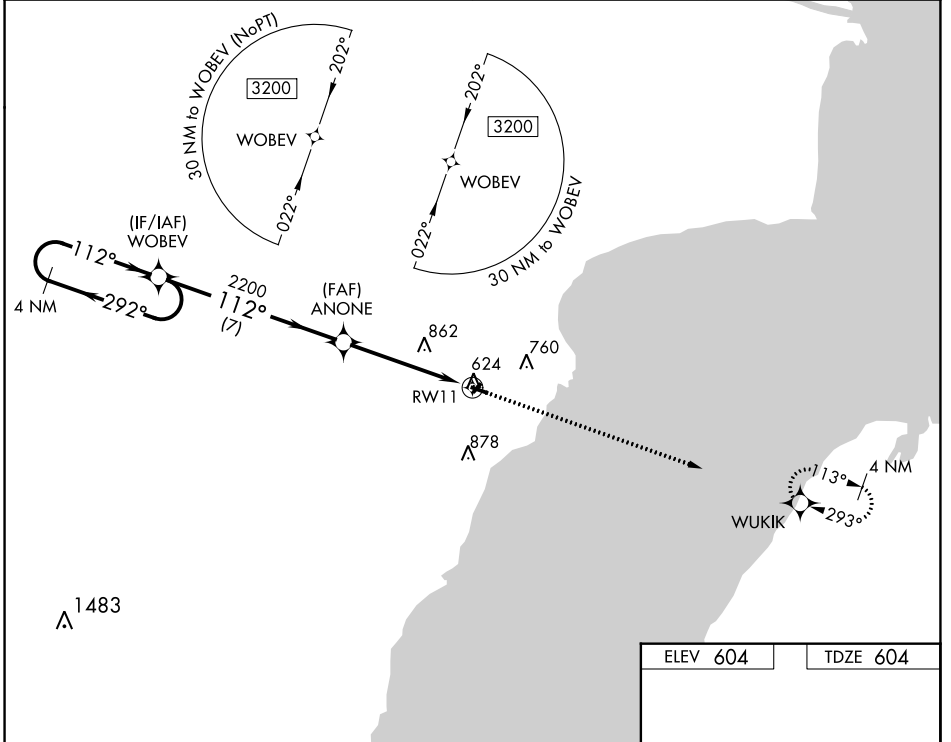
# RNAV (GPS) RWY 11

OCONTO/J DOUGLAS BAKE MUNI (OCQ)

**▼** Use Menominee, MI altimeter setting; when not received, use Green Bay altimeter setting and increase all MDA 40 feet and visibility Circling Cat C ¼ SM.  
**▲ NA** Procedure NA at night. DME/DME RNP-0.3 NA. Visibility reduction by helicopters NA.

**MISSED APPROACH:**  
Climb to 3200 direct WUKIK and hold.

AWOS-3 <b>120.925</b>	MNM AWOS-3PT <b>121.45</b>	GREEN BAY APP CON ★ <b>120.3 338.2</b>	UNICOM <b>122.8 (CTAF) ①</b>
--------------------------	-------------------------------	---	---------------------------------



CATEGORY	A	B	C	D
LP MDA	1200-1	596 (600-1)	1200-1¾ 596 (600-1¾)	NA
LNAV MDA	1220-1	616 (700-1)	1220-1¾ 616 (700-1¾)	NA
CIRCLING	1220-1	616 (700-1)	1260-1¾ 656 (700-1¾)	NA

EC-3, 26 JAN 2023 to 23 FEB 2023

EC-3, 26 JAN 2023 to 23 FEB 2023

REIL Rwy 11 and 29 ①  
MIRL Rwy 11-29 ①