

WAAS CH 93516 W17A	APP CRS 171°	Rwy Idg 5000 TDZE 5 Apt Elev 5
--	------------------------	---

RNAV (GPS) RWY 17

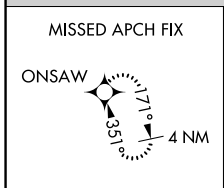
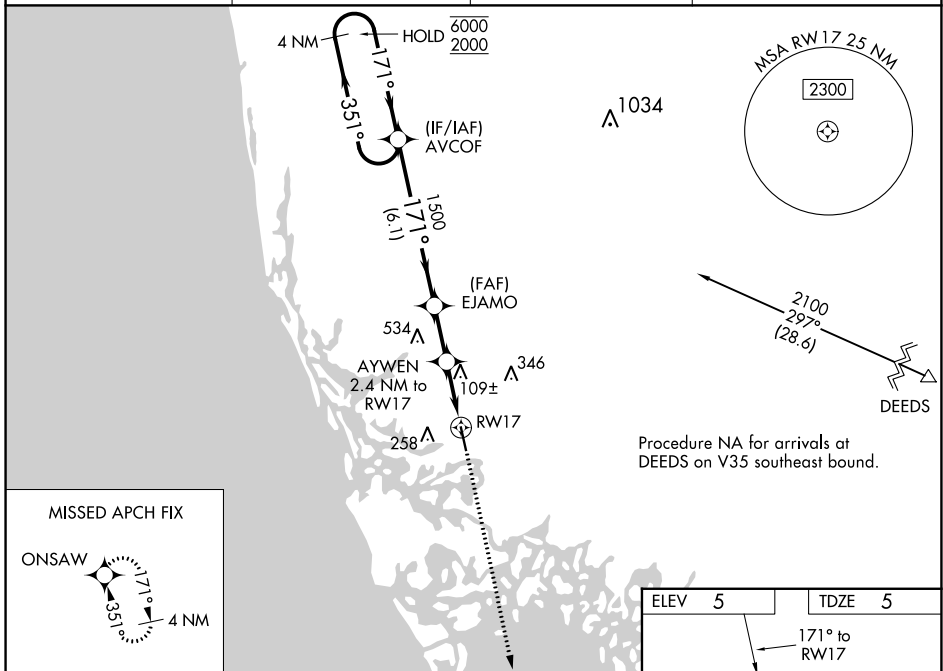
MARCO ISLAND EXEC (MKY)

PBN APCH.

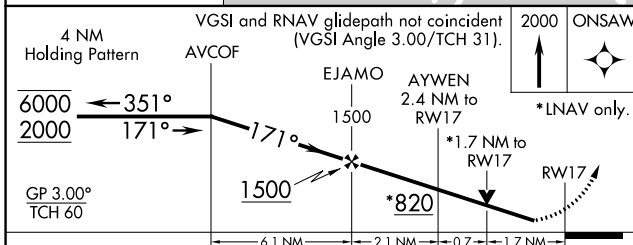
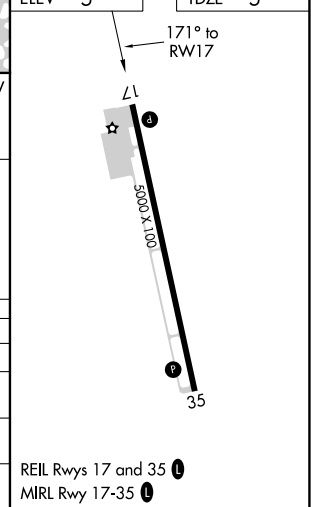
⚠ Baro-VNAV and VDP NA when using Naples altimeter setting. Rwy 17 helicopter visibility reduction below 3/4 SM NA. For uncompensated Baro-VNAV systems, LNAV/VNAV NA below 2°C or above 54°C. When local altimeter setting not received, use Naples altimeter setting and increase LPV DA to 326 feet; increase LNAV/VNAV DA to 484 feet, increase all MDAs 40 feet and LNAV visibility Cat C to 1 1/4 SM and Circling visibility Cat C to 2 SM.

MISSED APPROACH: Climb to 2000 direct ONSAW and hold.

AWOS-3PT 120.075	FORT MYERS APP CON ★ 124.125 371.85	CLNC DEL 120.8	UNICOM 122.7 (CTAF) 0
----------------------------	---	--------------------------	---------------------------------



ELEV 5	TDZE 5
---------------	---------------



CATEGORY	A	B	C	D
LPV DA		300-1	295 (300-1)	
LNAV/VNAV DA		458-1 1/2	453 (500-1 1/2)	
LNAV MDA	560-1	555 (600-1)	560-1 1/2 555 (600-1 1/2)	560-1 3/4 555 (600-1 3/4)
CIRCLING	620-1	615 (700-1)	660-1 3/4 655 (700-1 3/4)	840-2 3/4 835 (900-2 3/4)

REIL Rwy 17 and 35 0
MIRL Rwy 17-35 0

SE-3, 26 JAN 2023 to 23 FEB 2023

SE-3, 26 JAN 2023 to 23 FEB 2023