

WAAS CH <b>53316</b> <b>W35A</b>	APP CRS <b>351°</b>	Rwy Idg TDZE Apt Elev	<b>5000</b> <b>5</b> <b>5</b>
--	------------------------	-----------------------------	-------------------------------------

# RNAV (GPS) RWY 35

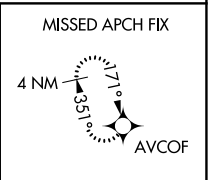
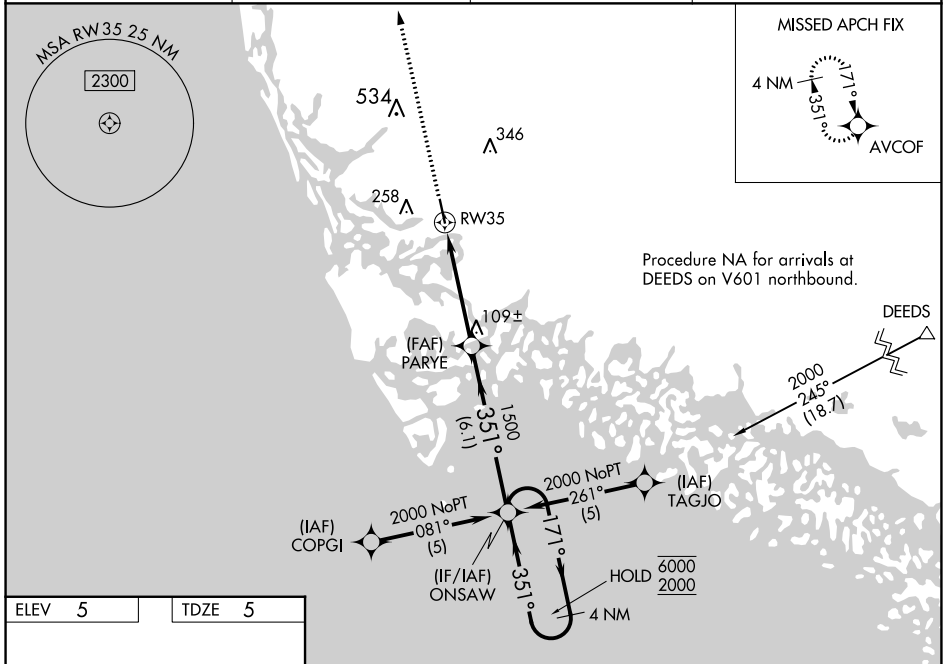
MARCO ISLAND EXEC (MKY)

PBN APCH.

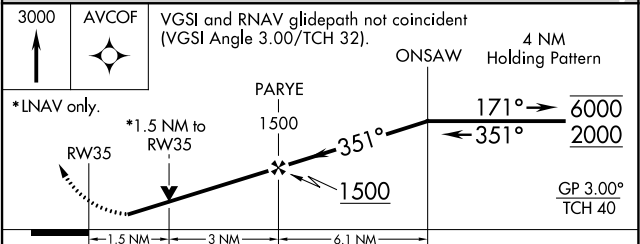
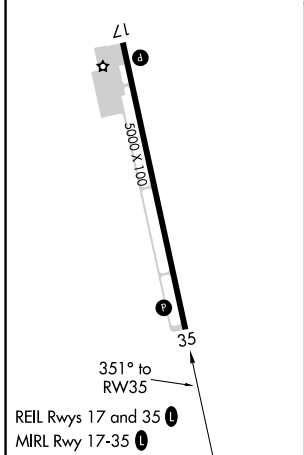
**▼** Baro-VNAV and VDP NA when using Naples altimeter setting. Rwy 35 helicopter visibility reduction below 3/4 SM NA. When local altimeter setting not received, use Naples altimeter setting and increase LPV DA to 312 feet; increase LNAV/VNAV DA to 420 feet; increase all MDAs 40 feet and visibility Cat C 1/4 SM. For uncompensated Baro-VNAV systems, LNAV/VNAV NA below 2°C or above 54°C.

**MISSED APPROACH:** Climb to 3000 direct AVCOF and hold, continue climb-in-hold to 3000.

AWOS-3PT <b>120.075</b>	FORT MYERS APP CON * <b>124.125 371.85</b>	CLNC DEL <b>120.8</b>	UNICOM <b>122.7</b> (CTAF) <b>0</b>
----------------------------	---	--------------------------	--



ELEV 5	TDZE 5
--------	--------



CATEGORY	A	B	C	D
LPV DA	286-1 281 (300-1)			
LNAV/VNAV DA	394-1½ 389 (400-1½)			
LNAV MDA	520-1 515 (600-1)	520-1½ 515 (600-1½)	520-1¾ 515 (600-1¾)	520-1¾ 515 (600-1¾)
CIRCLING	620-1 615 (700-1)	660-1¾ 655 (700-1¾)	840-2¾ 835 (900-2¾)	840-2¾ 835 (900-2¾)

SE-3, 26 JAN 2023 to 23 FEB 2023

SE-3, 26 JAN 2023 to 23 FEB 2023