

| | | | |
|----------------|-------------|----------|-------------|
| VORTAC TKO | APP CRS | Rwy Idg | 4018 |
| 109.8 | 153° | TDZE | 1418 |
| Chan 35 | | Apt Elev | 1418 |

VOR RWY 17

MORITZ MEML (K61)

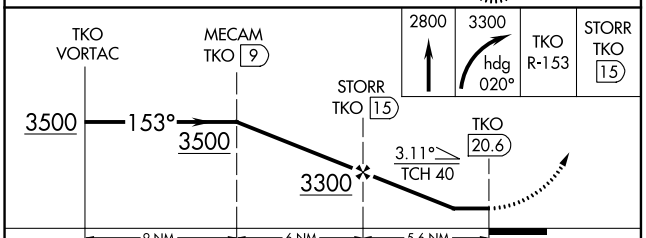
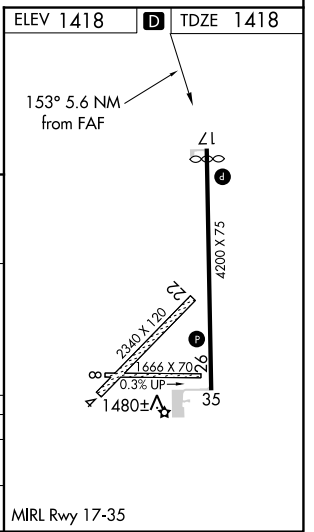
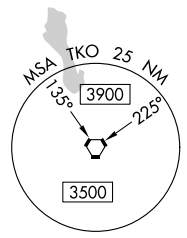
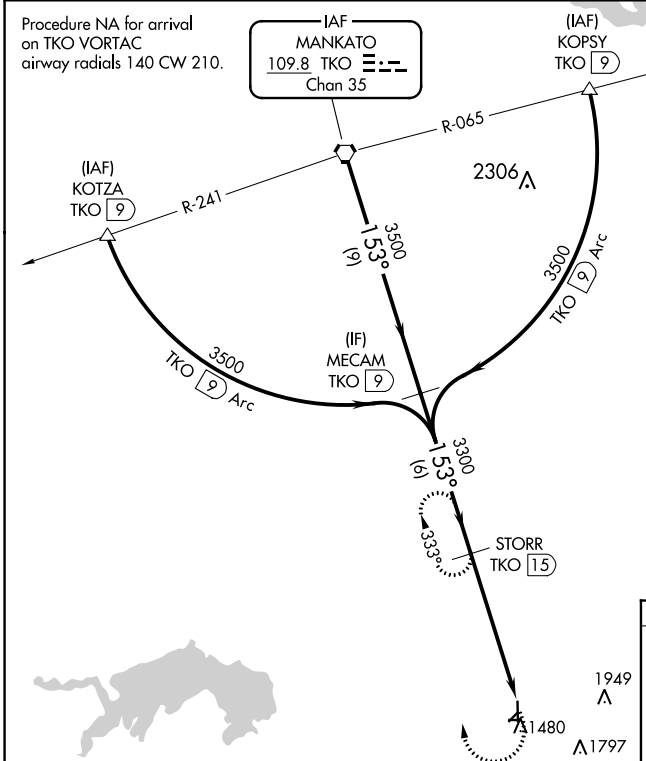
DME required. DME required for procedure entry.

▼ Rwy 17 helicopter visibility reduction below 1 SM NA. Circling Rws 4, 8, 22 and 26 NA. Straight-in Rwy 17 NA at night, Circling Rwy 17 NA at night. When local altimeter setting not received, use Concordia altimeter setting and increase all MDA 80 feet and all Cat C visibilities ¼ SM.

▲ NA

MISSED APPROACH: Climb to 2800 then climbing right turn to 3300 on heading 020° and TKO R-153 to STORR/15 DME and hold.

| | | |
|--------------------------|--|---------------------------------|
| AWOS-3 118.225 | KANSAS CITY CENTER 134.9 363.2 | UNICOM 122.8 (CTAF) 0 |
|--------------------------|--|---------------------------------|



| CATEGORY | A | B | C | D |
|-------------------|-----------------------|-------------------------|-------------------------|----|
| S-17 | 2040-1 | 622 (700-1) | 2040-1¾ 622 (700-1¾) | NA |
| C CIRCLING | 2040-1 622 (700-1) | 2260-1¼ 842 (900-1¼) | 2260-2½ 842 (900-2½) | NA |

NC-2, 26 JAN 2023 to 23 FEB 2023

NC-2, 26 JAN 2023 to 23 FEB 2023